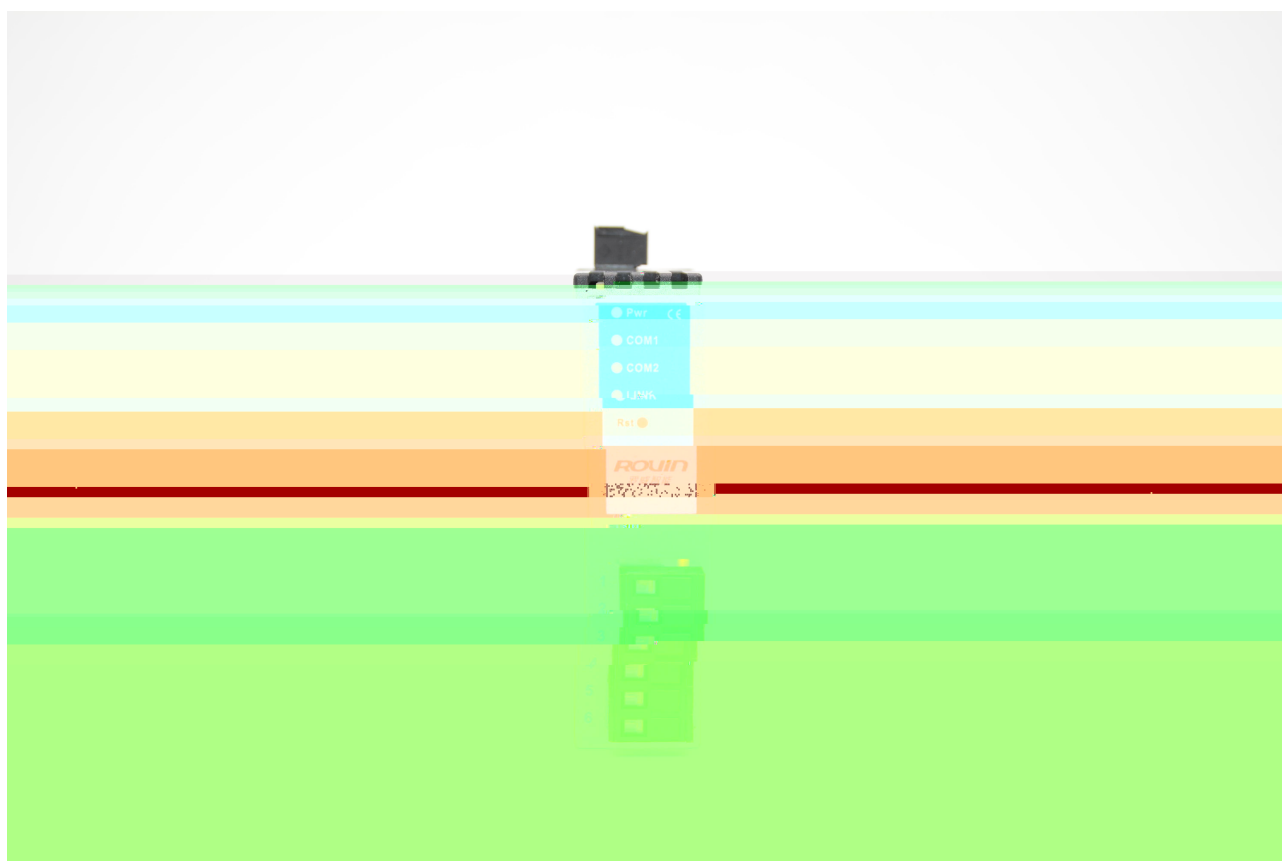
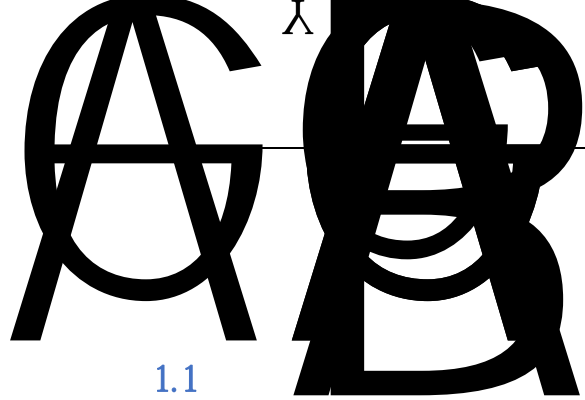




RVNet-MB

Modbus





1.1

RVNet-MB



TCP

RVNet - MB
2 RVNet - MB Modbus RTU/ASCII Modbus TCP

PLC

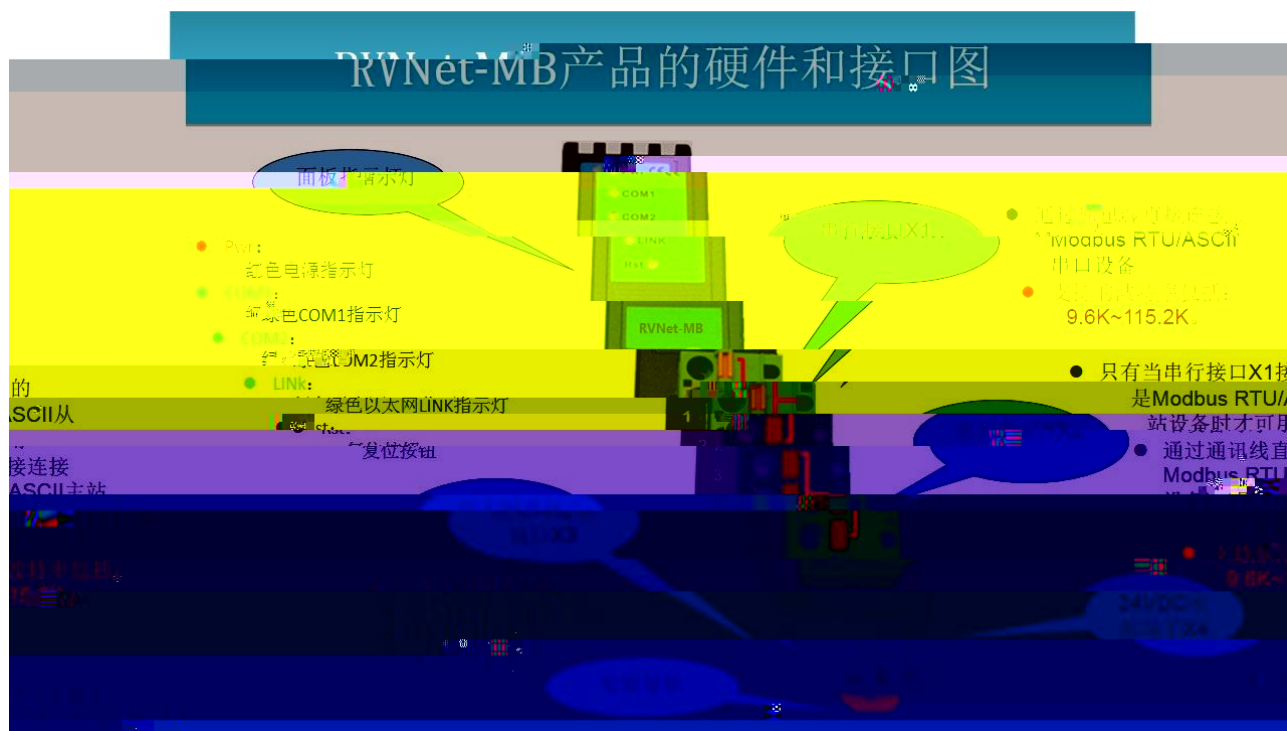
TCP

RVNet - MB

TCP

3 RVNet - MB Modbus TCP 2 3ms

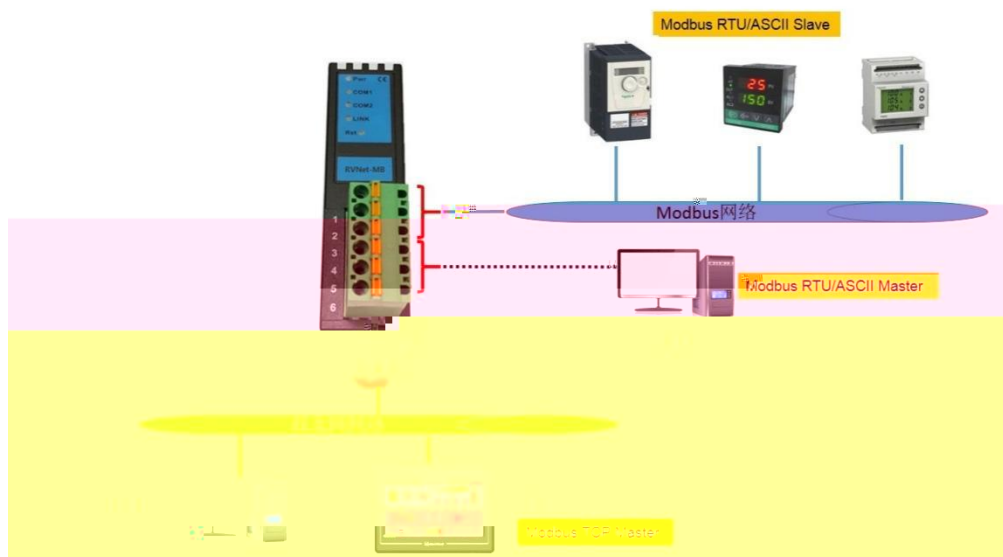
2.1



1.	X1	Modbus						
	➤	Modbus	RVNet - MB	Bus	- TCP			
			Modbus	Modbus			Modbus	
	➤	Modbus	X2	Modbus	Modbus			X2
			RVNet - MB	Bus	-- TCP			
			X2					
2.	X2	X1	Modbus	RVNet - MB				Bus
	- TCP							
3. Rst:	5-6	COM						

2.2

2.2.1



- 1. Modbus Modbus X2
 - 2. 6 Modbus RTU/ASCII
 - 3. Modbus RS485 RS232 Modbus
- Mosbus

2.2.2



- 1. Modbus RTU/ASCII Modbus TCP
- 2. X2

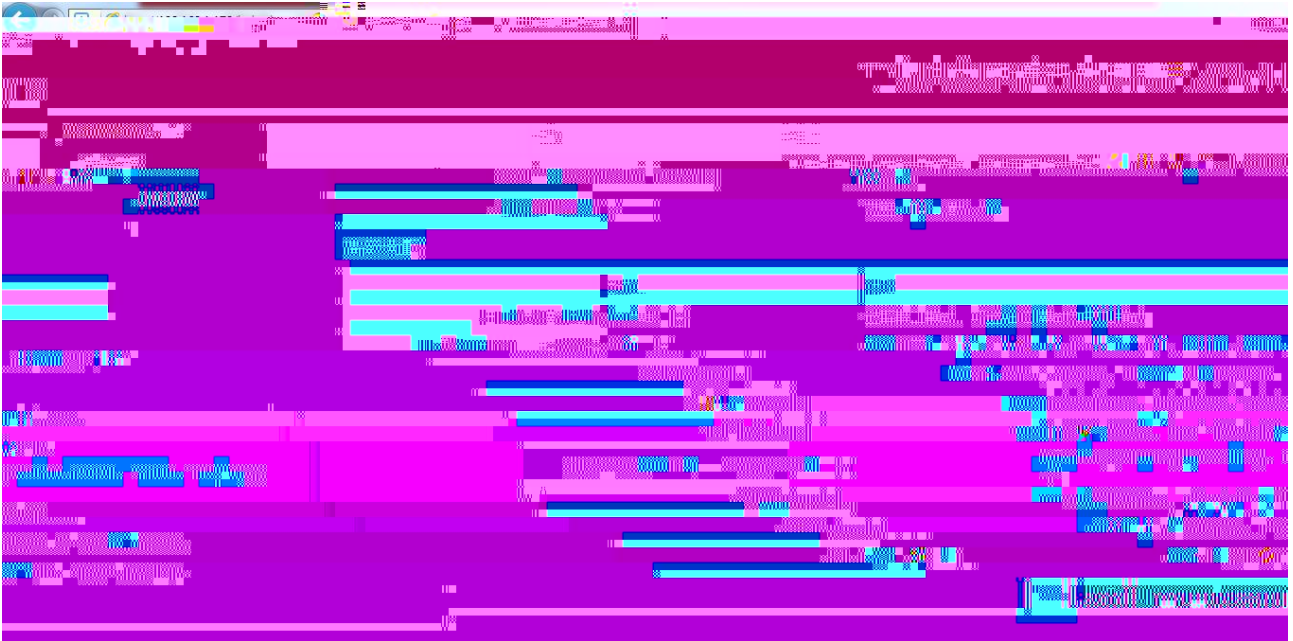
23

RVNet-MB	4	X1	X2	RJ45	X3	X4
----------	---	----	----	------	----	----

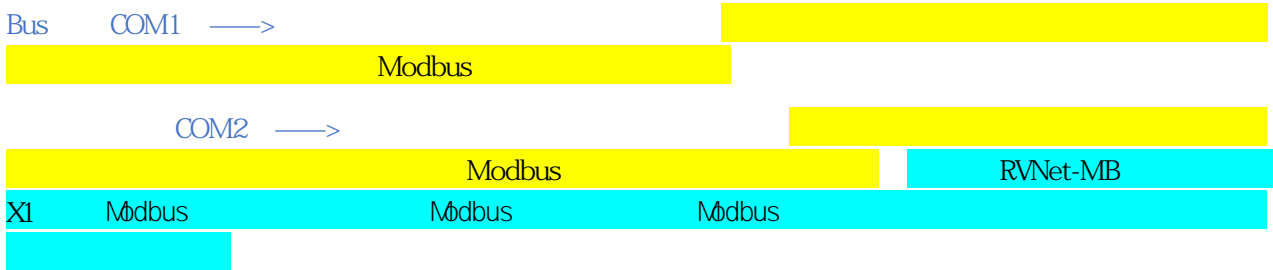
Internet Explorer t

192.168.1.1 t r

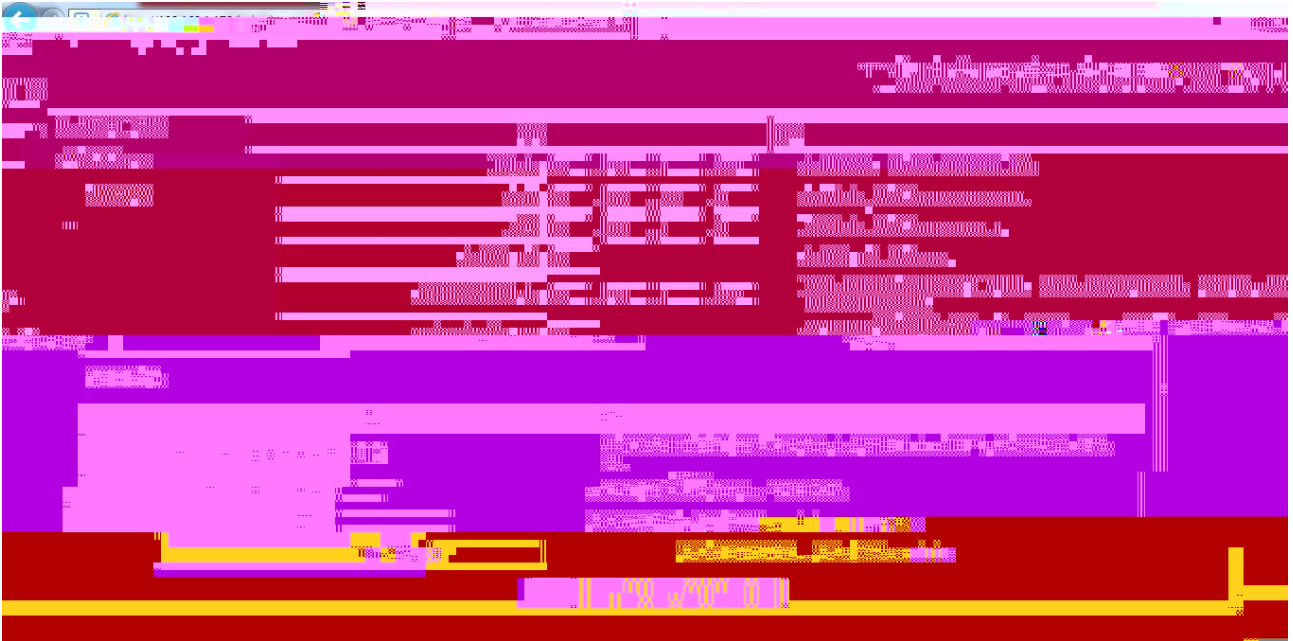
3.2.1



RVNet-MB Bus —TCP Bus —TCP RVNetTCP
 Bus —TCP RVNet-MB Modbus Modbus
 TCP TCP , 22
 RVNet-MB 3
 RTU ASCII RTU



3.2.2



RVNet-MB IP

[]

RVNet-MB

IP

ModbusTCP

502

IP

RVNet-MB

IP

Bus

—TCP

RVNet-MB

Bus

—TCP

Modbus

“ ”

Bus

—TCP

“

”

modbus

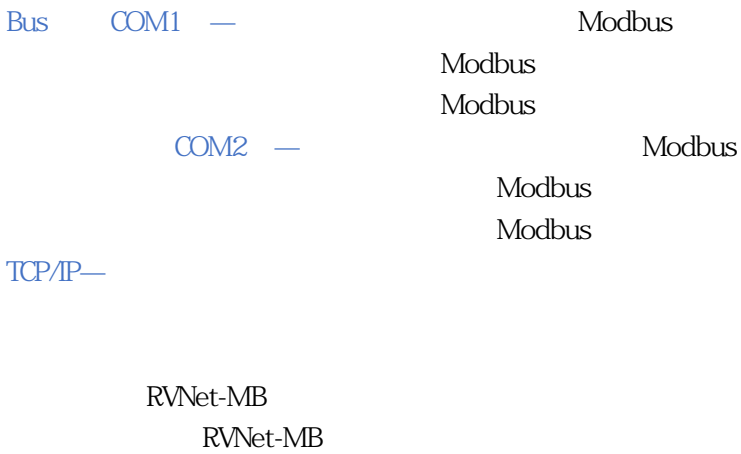
Bus

—TCP

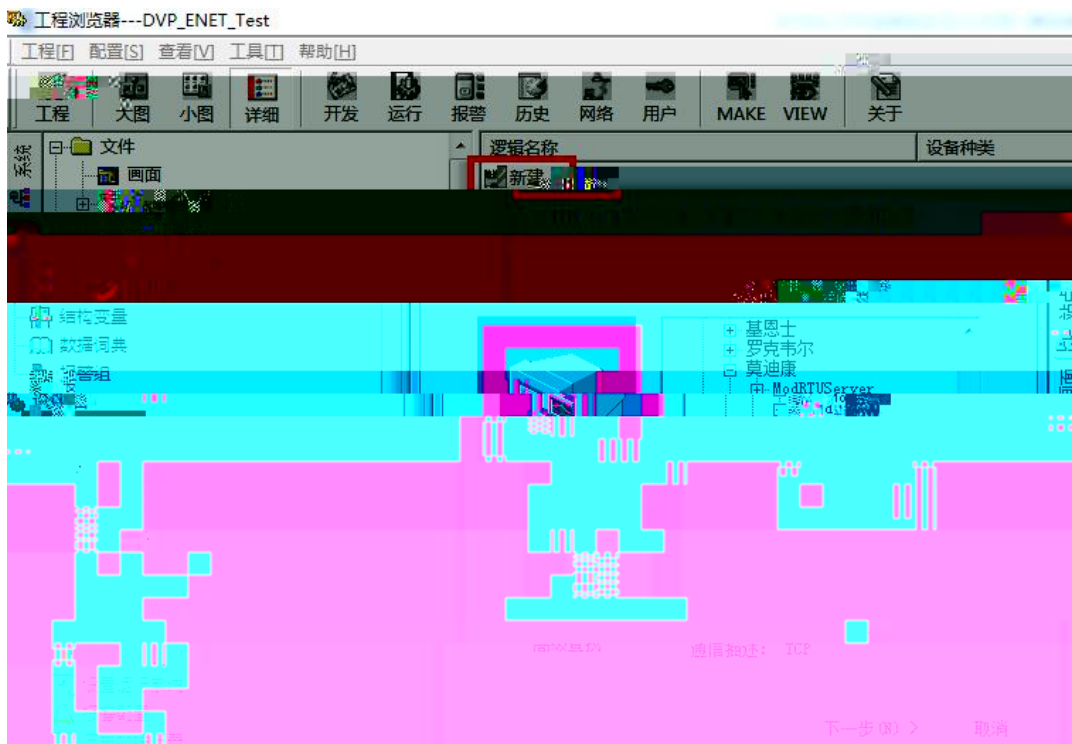
[]

RVNet-MB

3.2.3



4.1 RVNet-Z b



3.

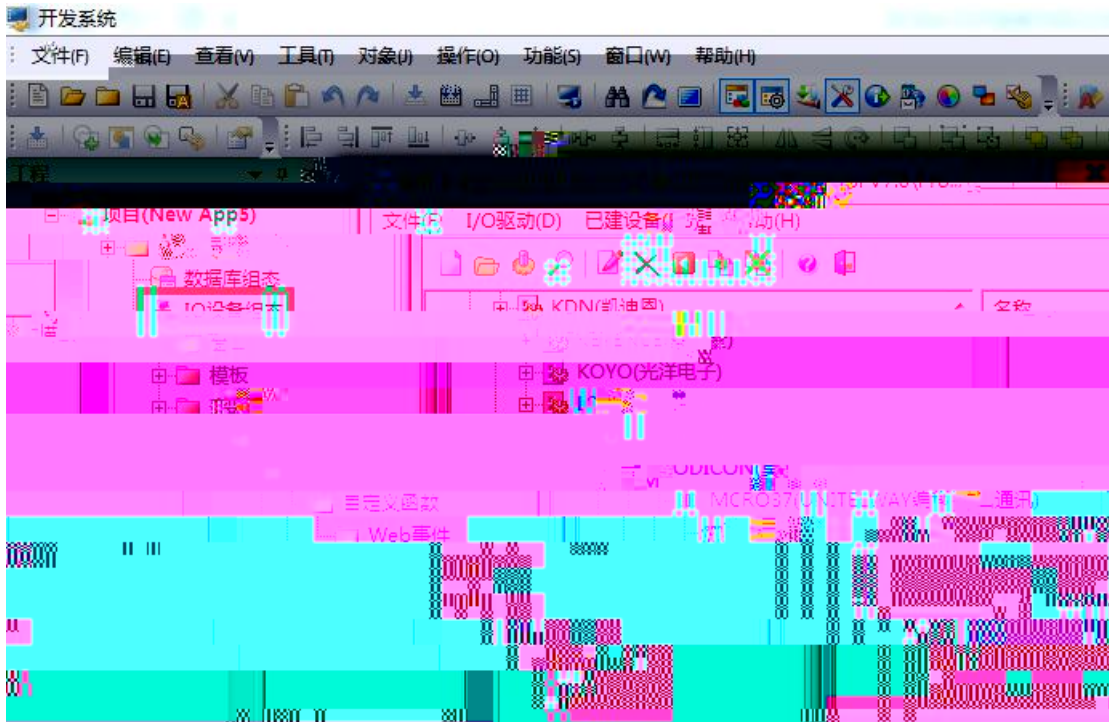


4. RVNet-MB 逻辑名称 /



4.2 RVNet-MB

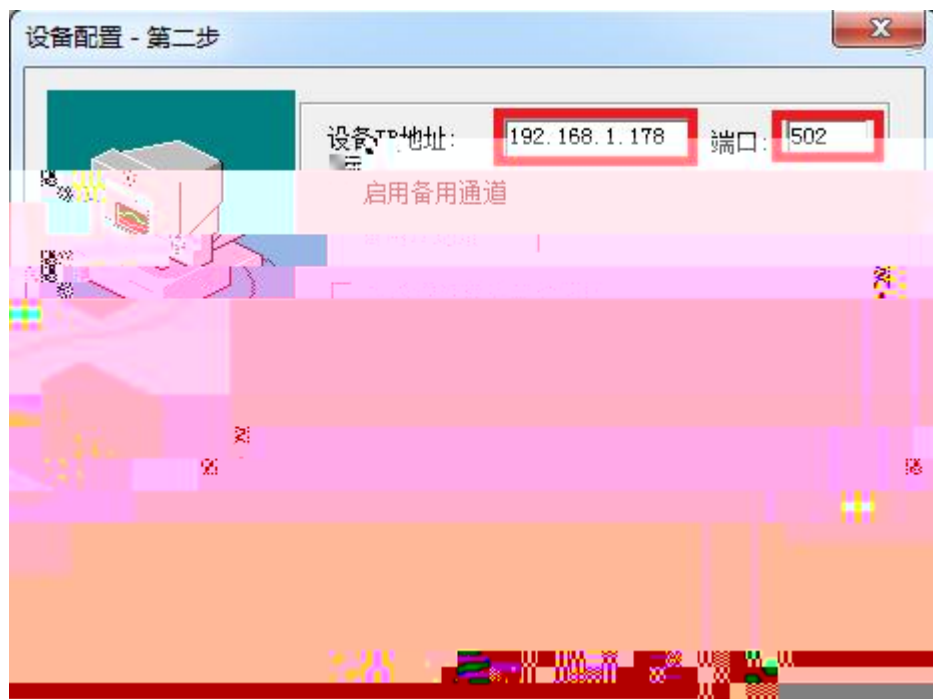
1. " IO " PLC " MODI CON -MODBUS TCP "



2. " " DVP " " 1
Mdbus " "



3. " IP " RVNet-MB IP 192.168.1.178 " " 502

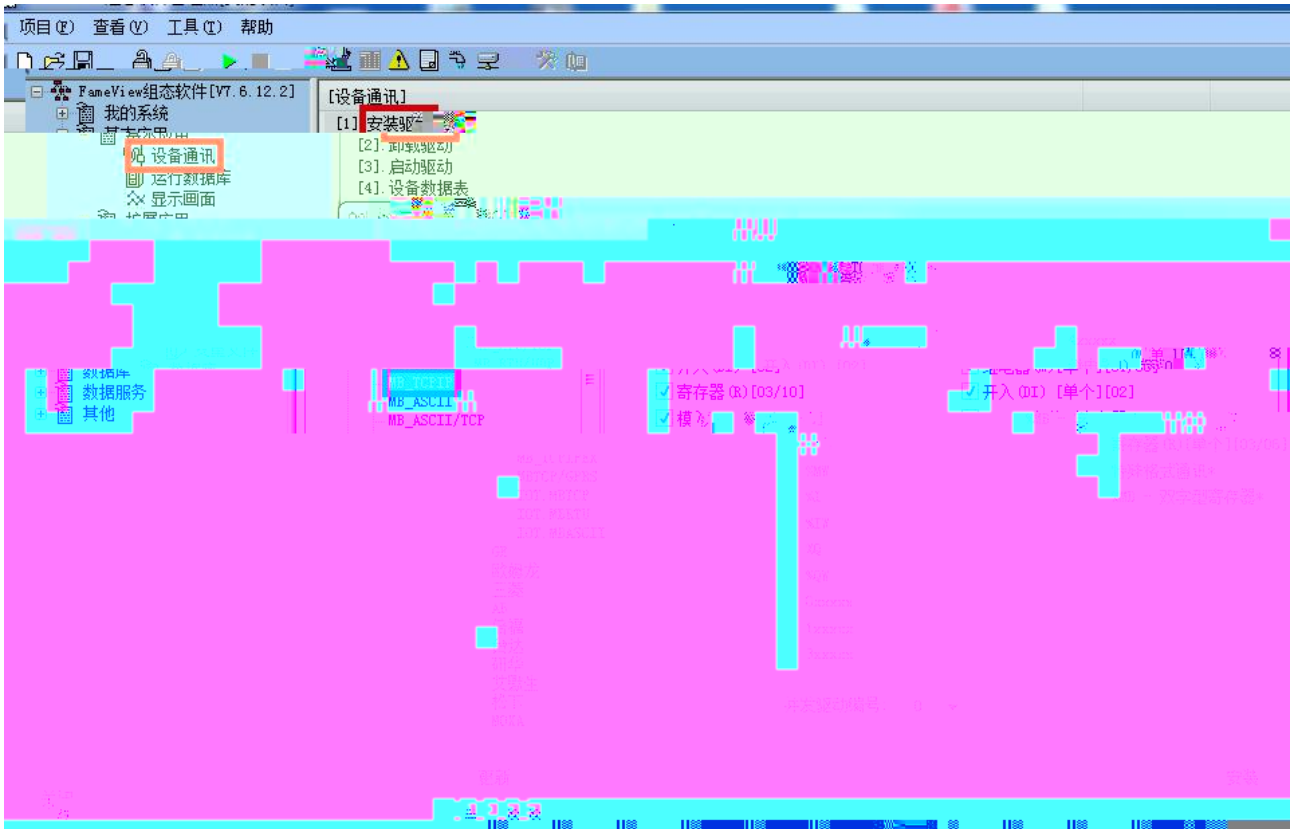


4.

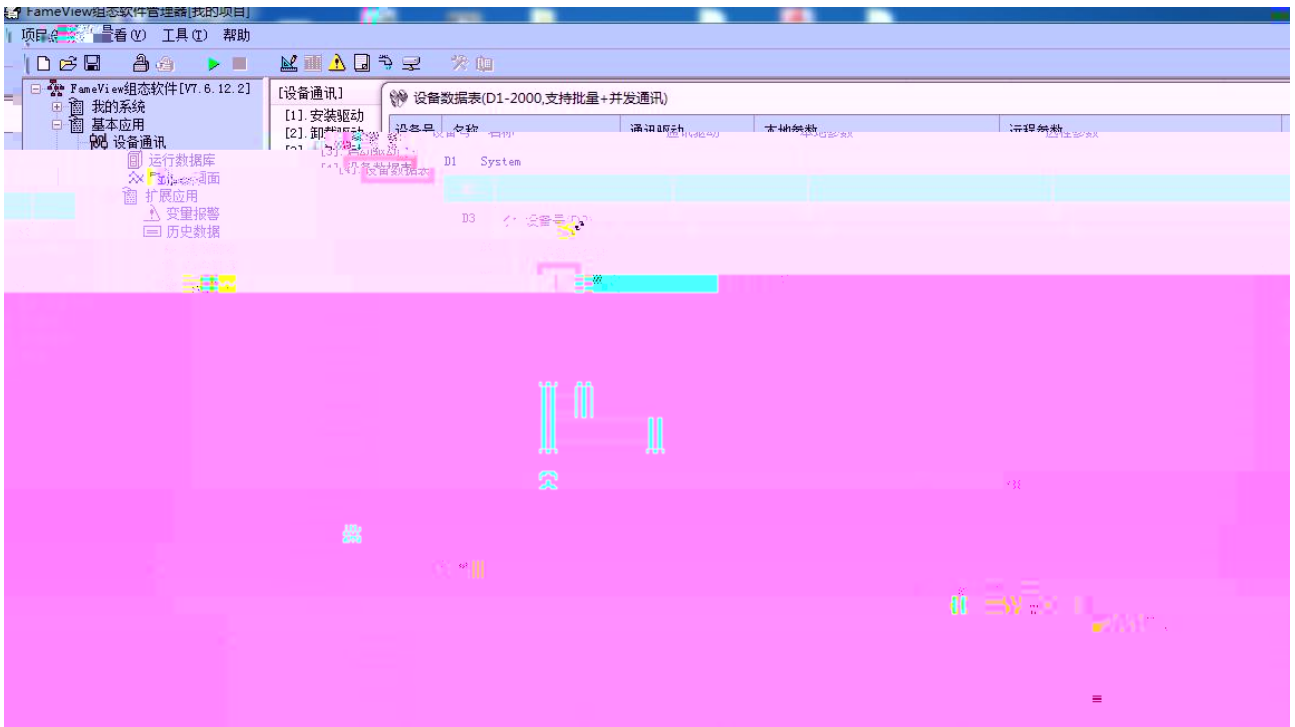


4.3 RVNet-MB

1. " " " " " MB_TCPI P " "

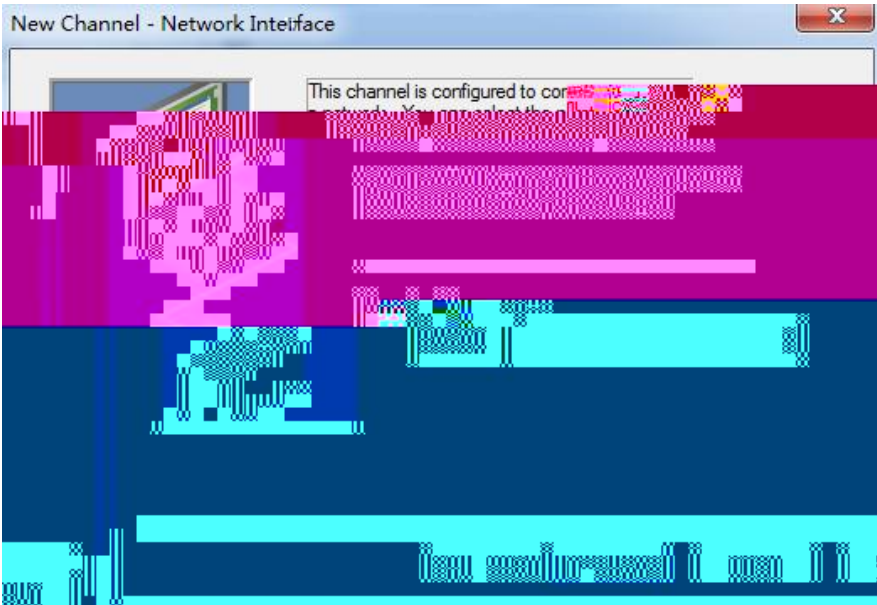


2	"	"	"	"	XJ	"	MB	"	MB
	Mdbus						502		IP
	IP	192.168.1.178							RVNet-MB

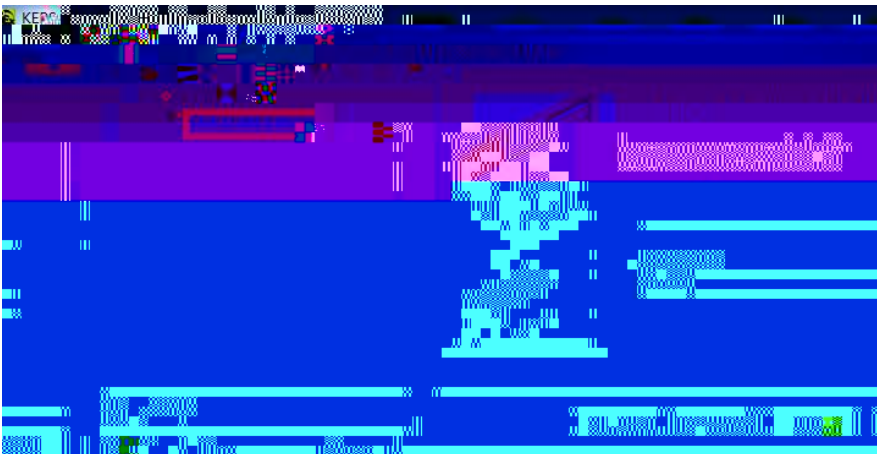


4.4 RVNet-MB Kepware

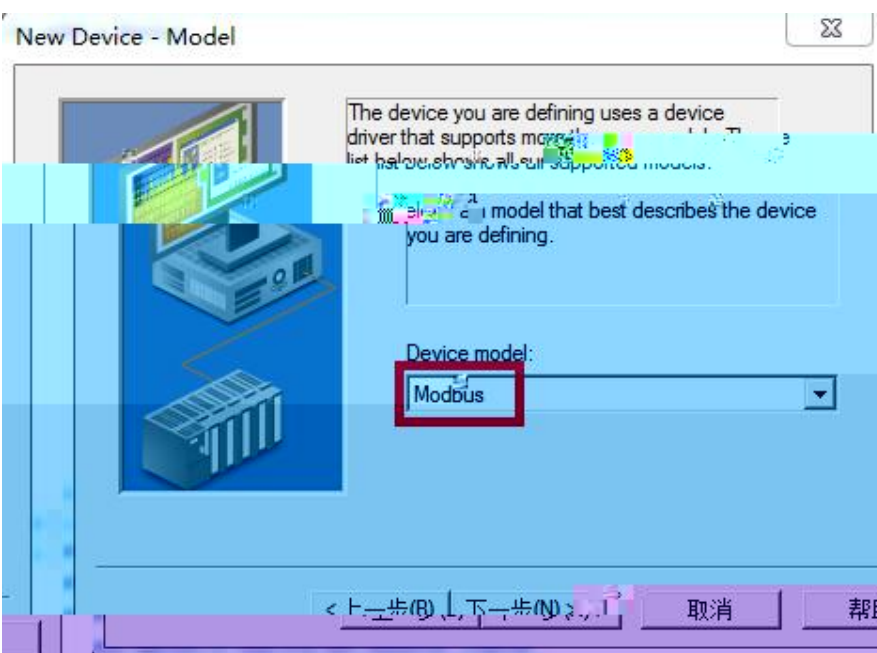
1. KEPServerEX “ Click to add a channel ” i



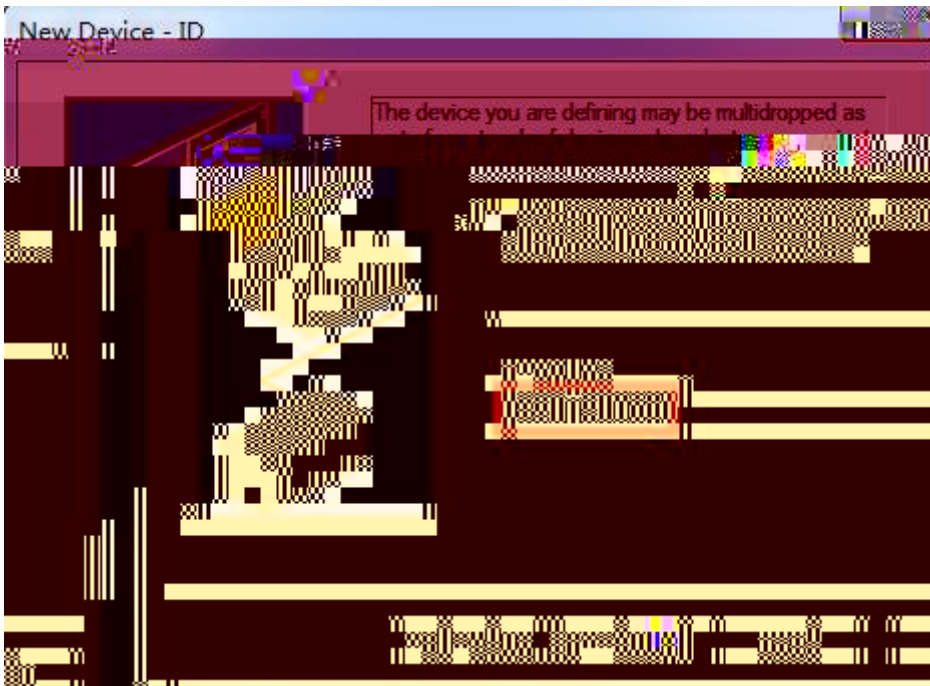
4. " click to add a device" ,



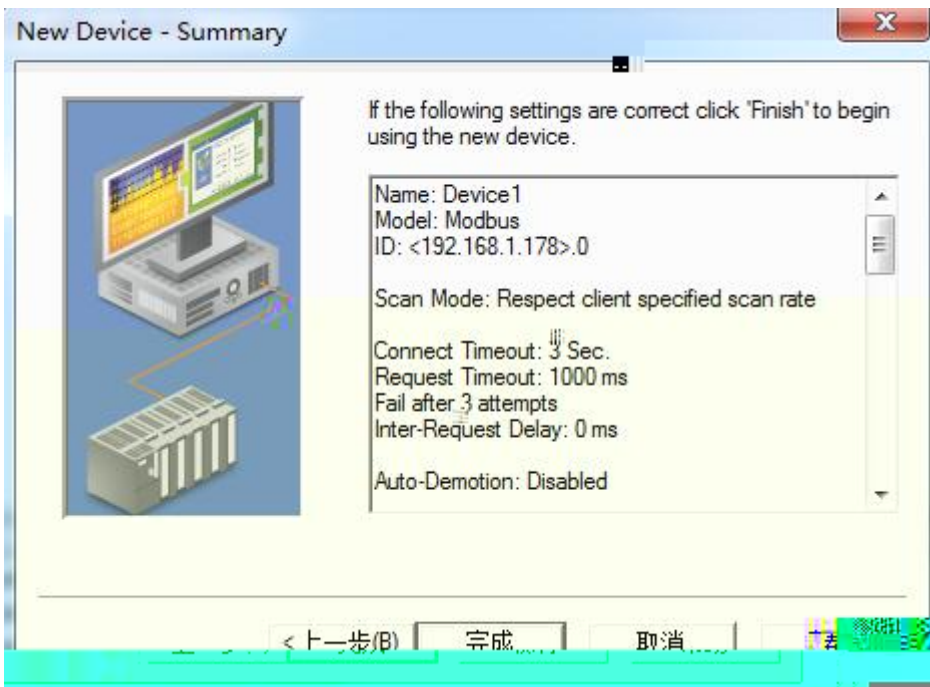
5. " Device Model " " Modbus"



6. " Device ID" IP 192.168.1.178.0 Modbus

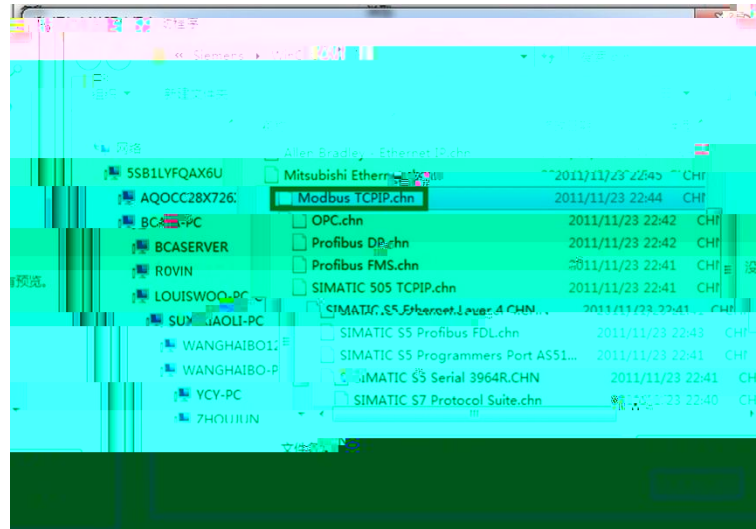


7.



4.5 RVNet-MB WINCC

1. Wincc " " " i



2. “Modbus TCP/IP #1” “ ” “ ” “ ”
 “ CPU ” “ 984” “ ” RVNet-MB IP “ ” 502 ”
 “ Modbus



RVNet-MB

Modbus

Pwr COM1 COM2 Link

IEEE 802.3 Link/Active

Auto-MDIX

RJ45

10/100Mbps

Modbus TCP

TCP	6
X1	RS485 RS232
	9.6K~115.2Kbps
	Modbus RTU/M

2755

250101

0531-88689022

0531-88689022

111

266107

0532-68894021 83029299

0532-83029299

18753243991 garywei@dingtalk.com

www.roviniot.com

