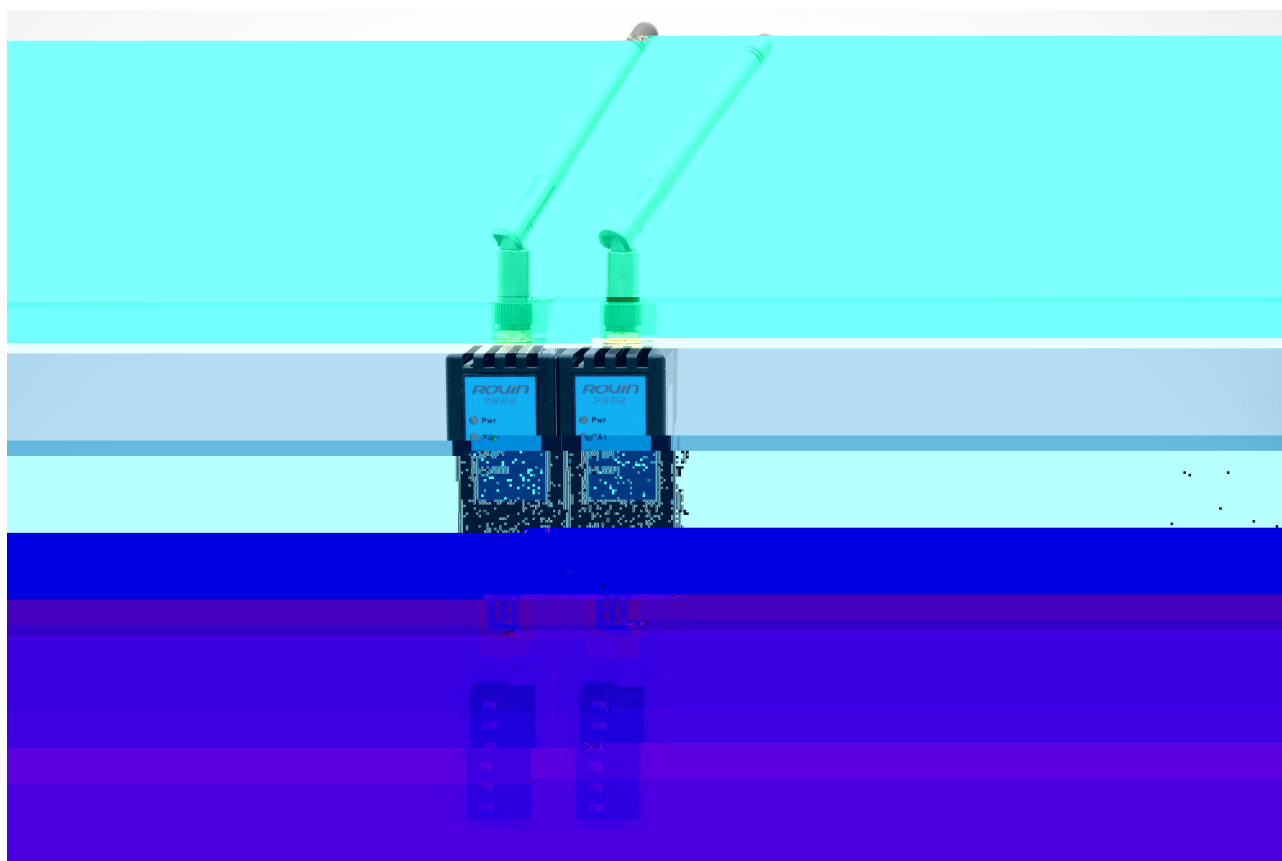


ROVIN



1.RVNet-WiFi

FJBYh! K]:]

% K]:] &

'

K]:]

FG& &#(,) #(&&

K]:] #

D@7

% ')aa

87&(J

& K]:]

' K96

(CD7

) FG& &#FG(,) #FG(&&

#K]:]

* GH5 5D K]:]

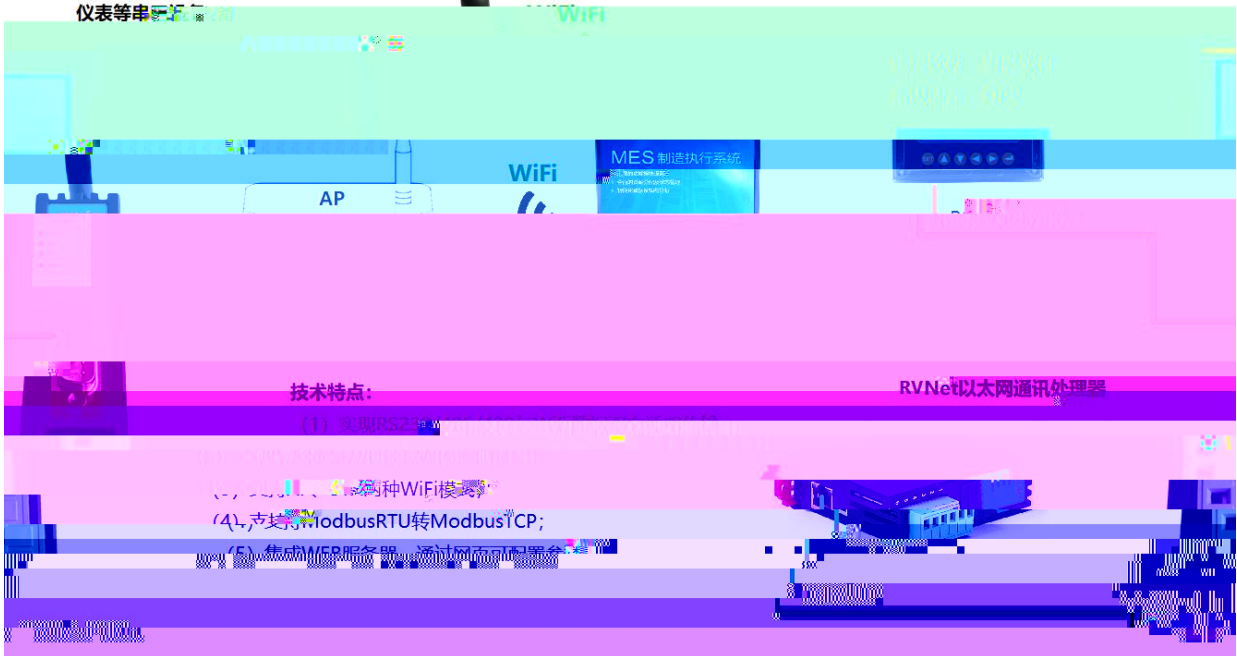
+ AcXVi g

AcXVi g FH

AcXVi g H7D

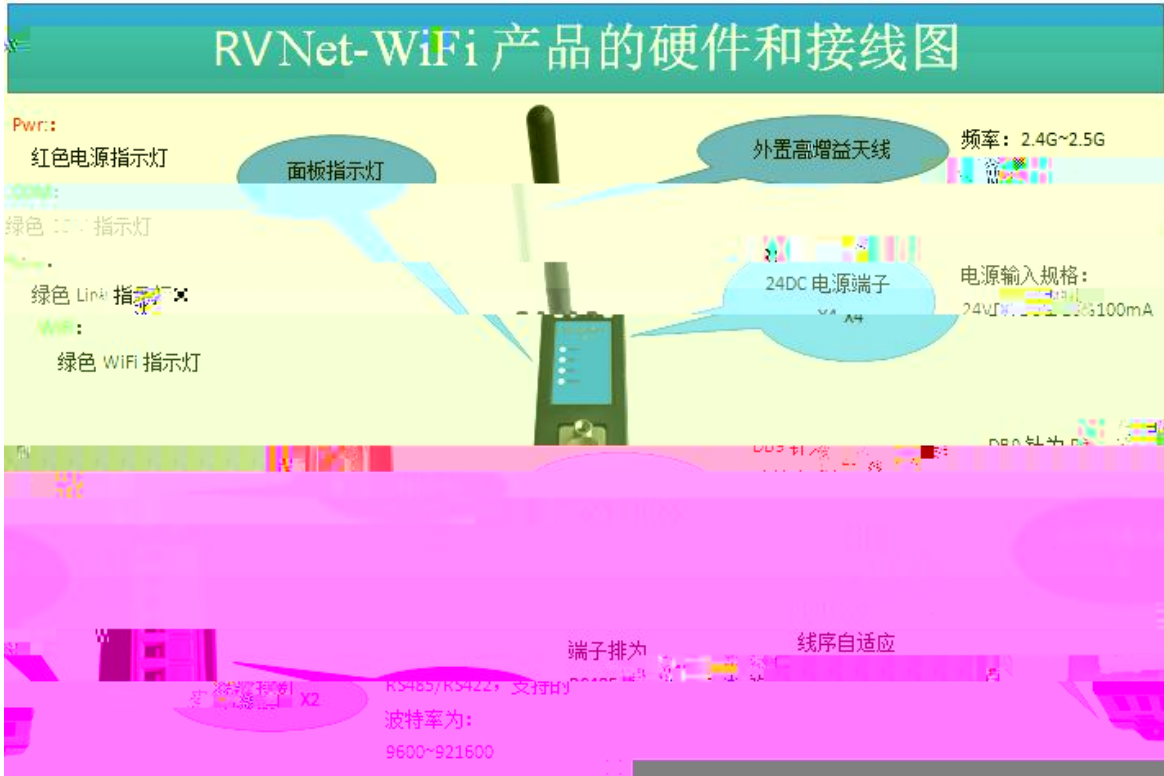
,

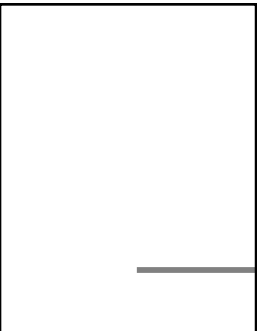
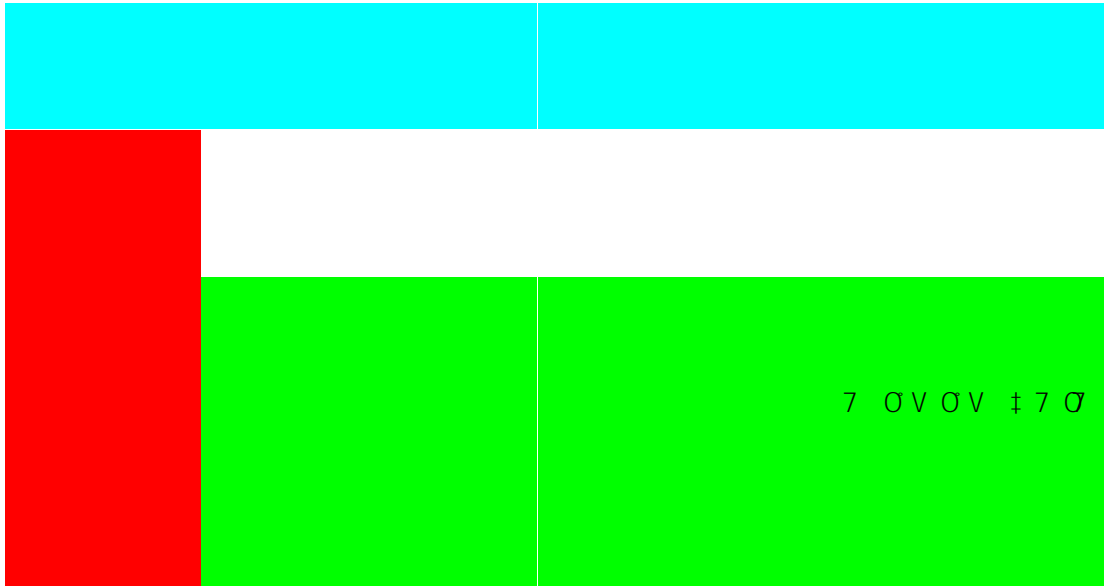
RS232/485/422转WiFi/以太网
支持 AP、STA 模式

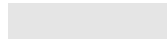


FJBYh! K]:]

K]:]







% &

@5B =D

@5B

@5B

=D

G+5

K]:] =D

8<7D

FJBYh! K]:]

=D

|

设备信息

参数配置

通讯诊断

修改密码

帮助

通讯诊断

网络通讯

WiFi->通讯请求总数: 581

正确响应次数: 575

错误响应次数: 0

TCP连接数: 2

Lan->通讯请求总数: 576

正确响应次数: 575

错误响应次数: 0

TCP连接数: 1

串口通讯

COM->通讯请求总数: 0

正确响应总数: 0

错误响应次数: 0

系统信息

运行时间: 0 天 0:1

设备信息

修改密码

去新配置

修改密码后，点击[确认]按钮

通讯诊断

修改密码

功能说明

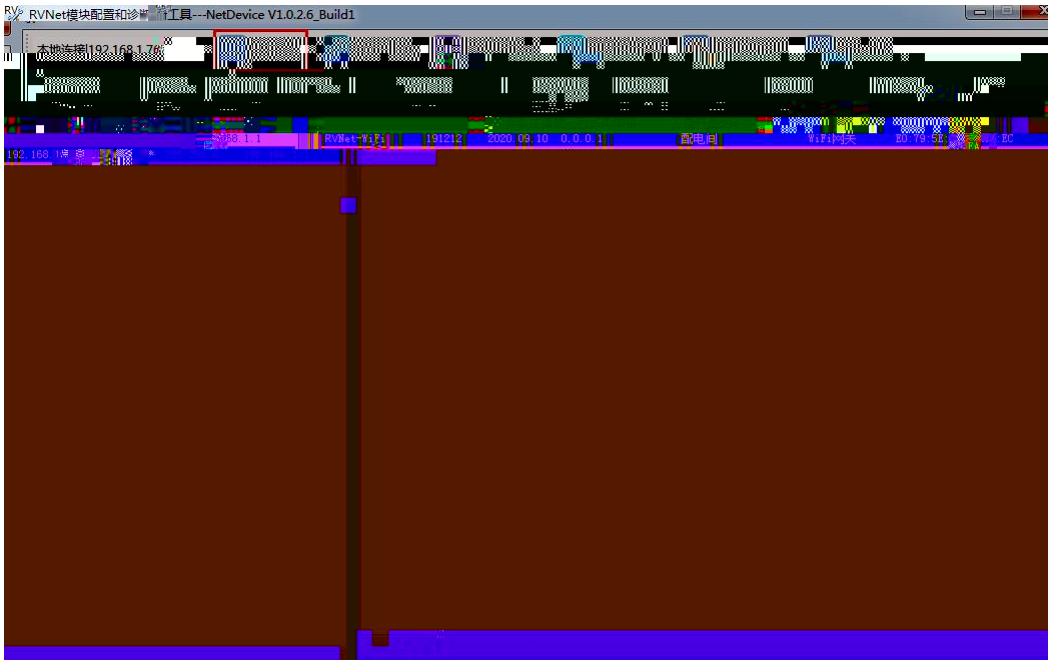
原密码:	<input type="password"/>
新密码:	<input type="password"/>
<input type="button" value="确认"/>	

“ Q

|



4.NetDevice





FJBYh! K]:]

D@7

% BYh8Yj]W

%

D@7

%

\$

%



&

D@7

=D

f

ž b a"

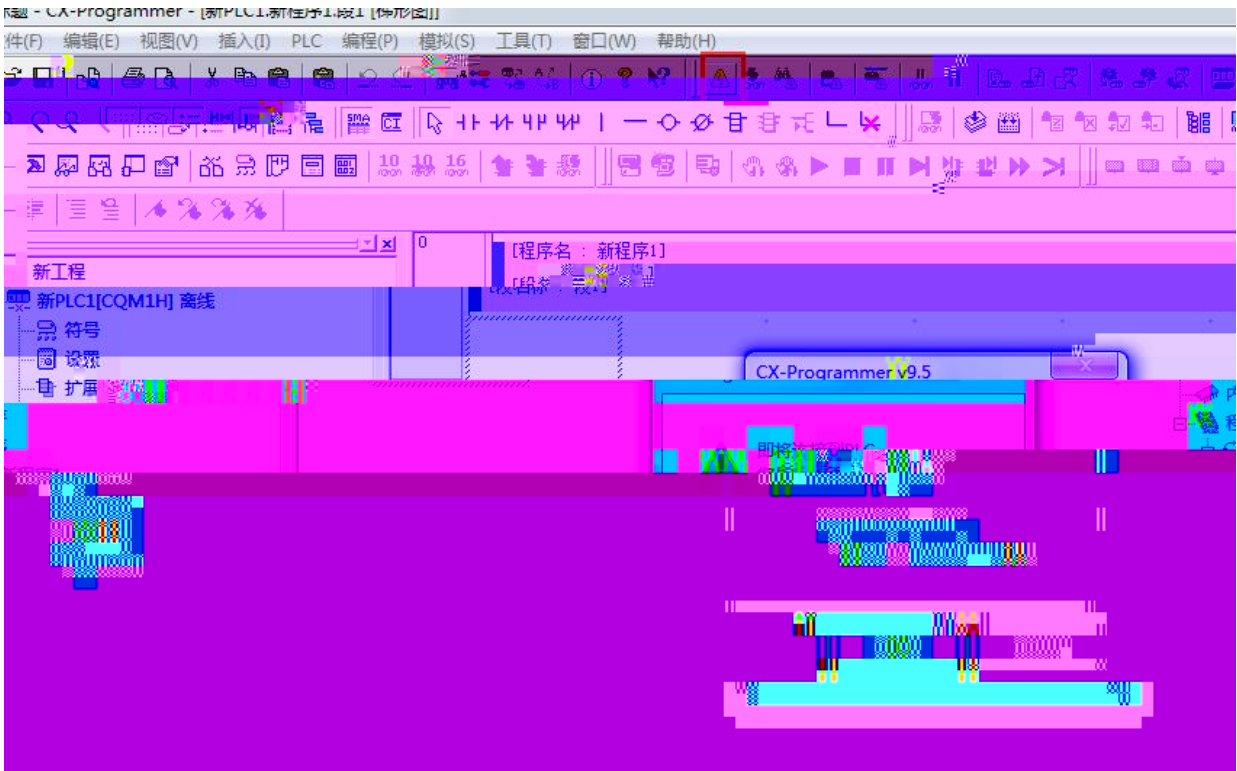
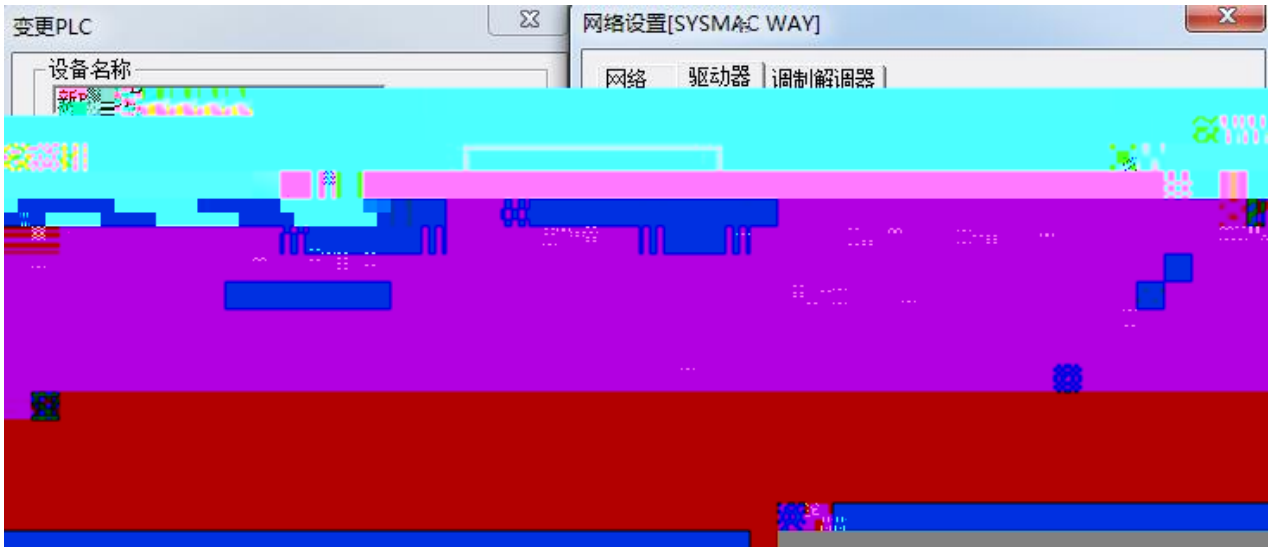
=D

Db

@5B

=D

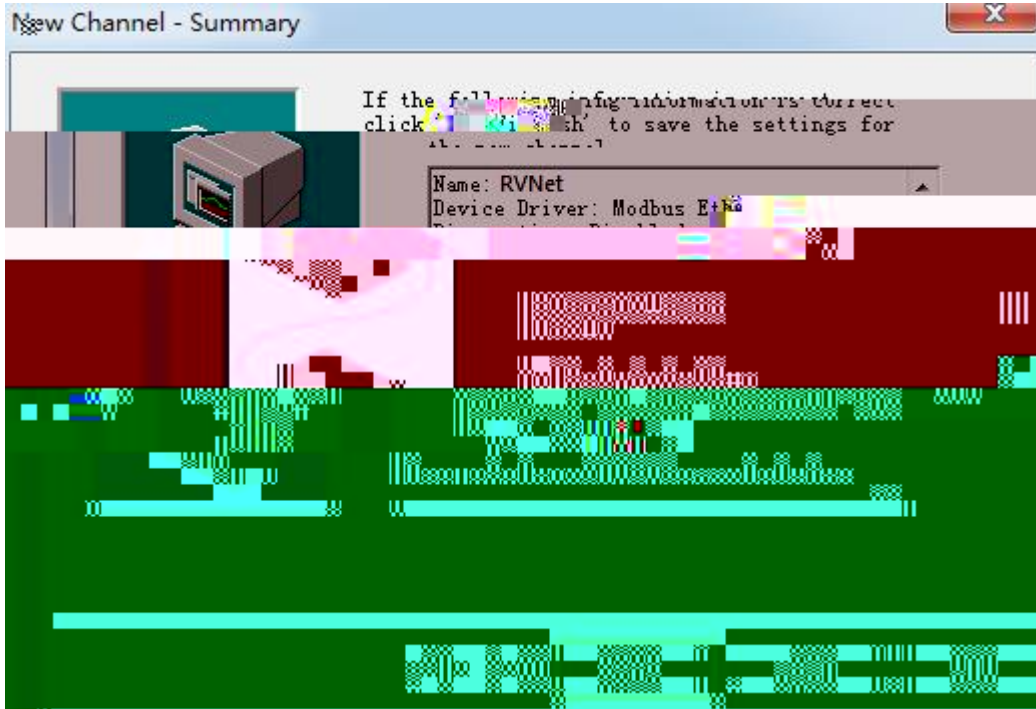
b



% AcXVi g 9h\YfbYh

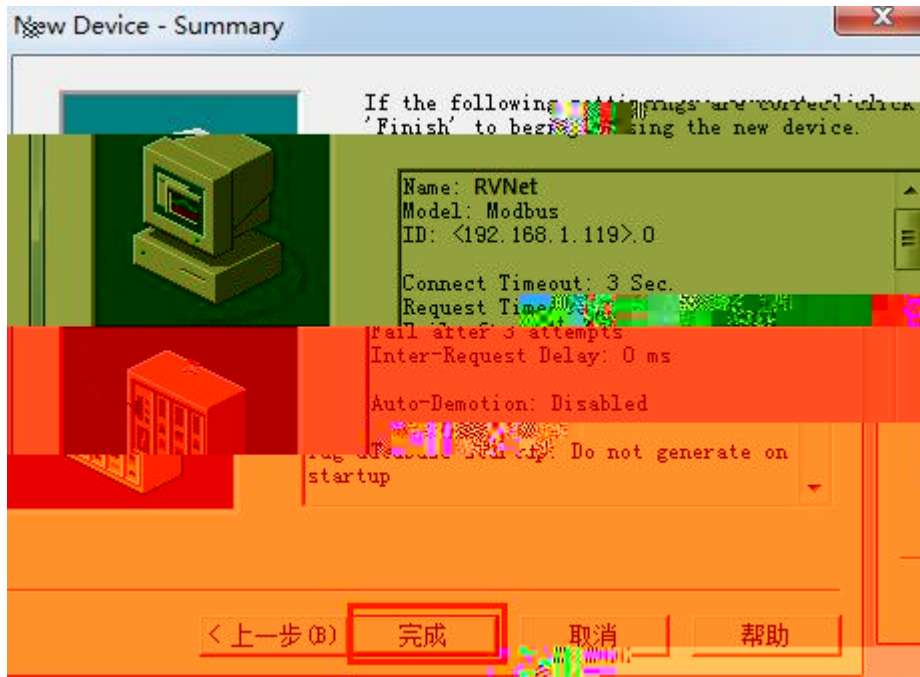


&

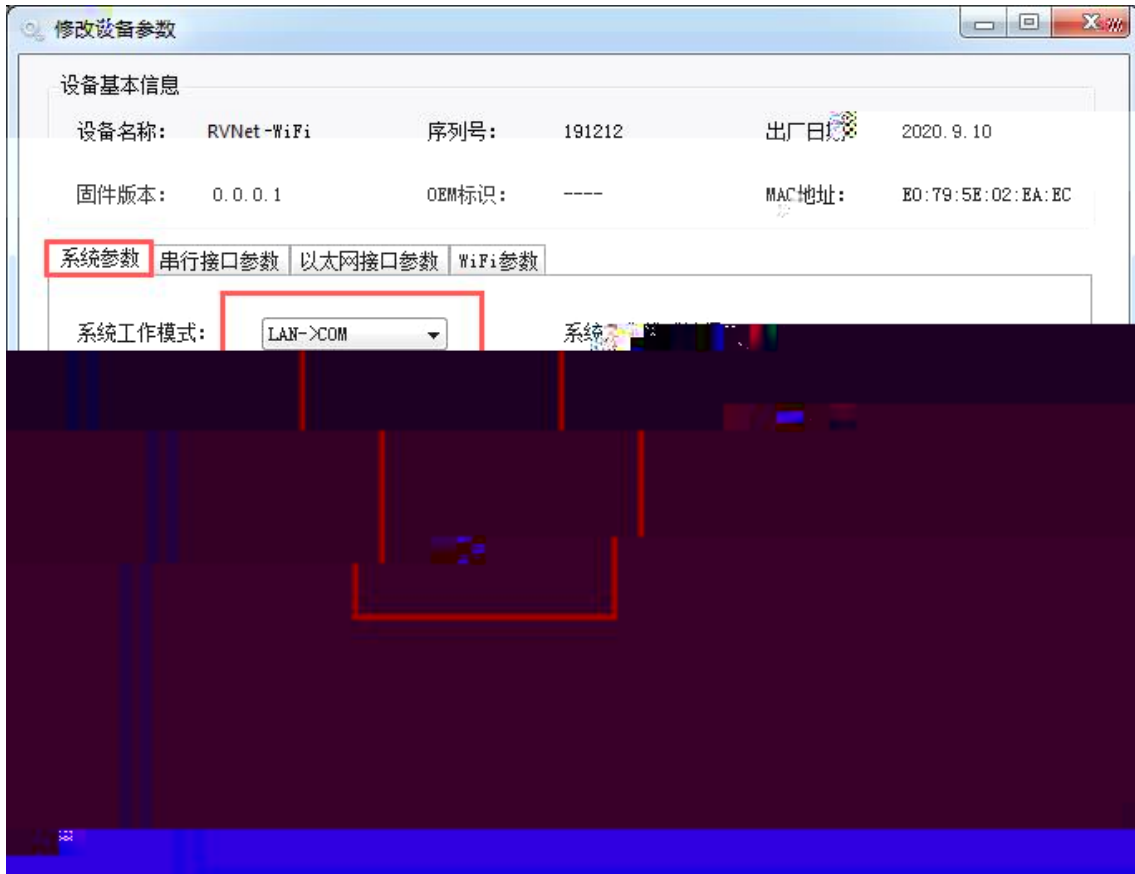


' AcXVi g

)

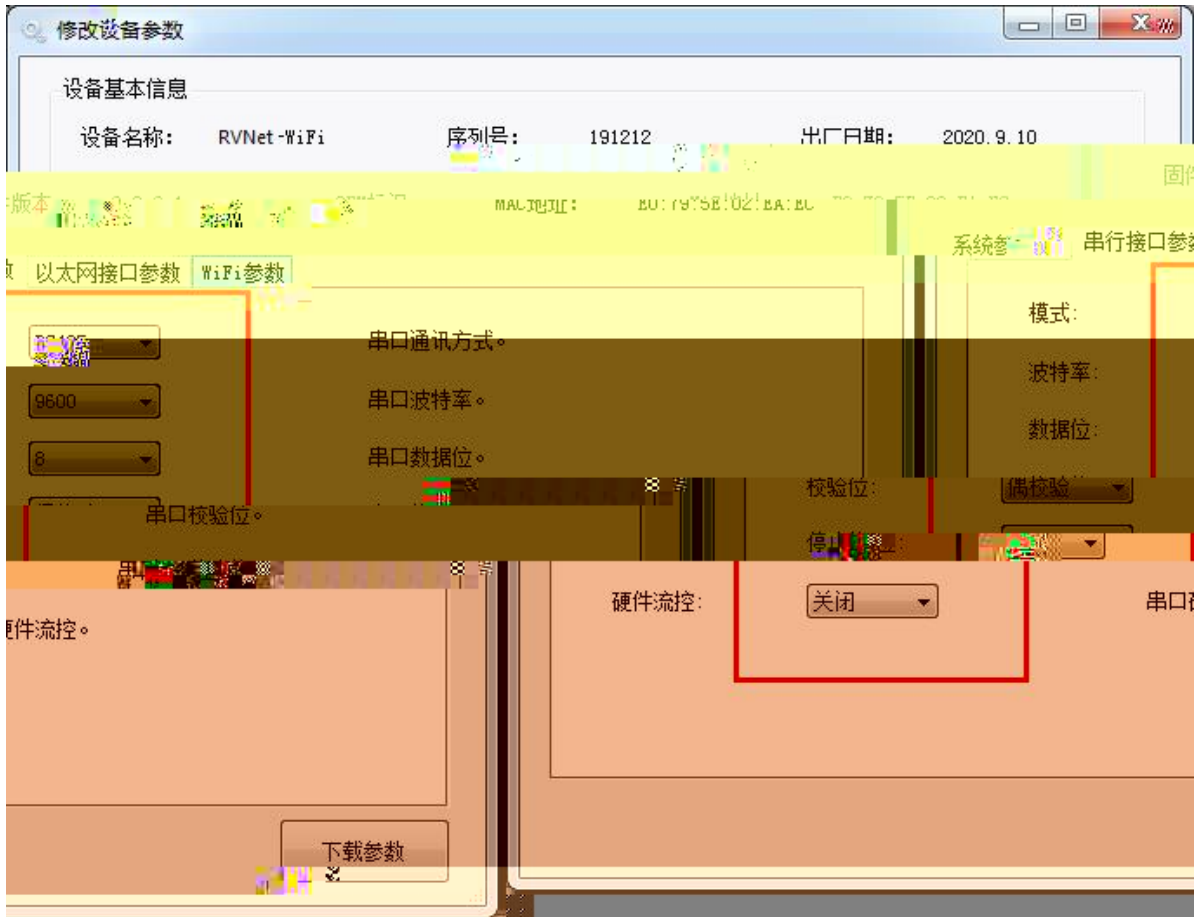


FJBYh! K]:] FJBYh! K]:] AcXVi g
AcXVi g FH AcXVi g H7D FJBYh! K]:] K]:] acXgWUb
FG(,)
% BYh8Yj] W
% AcXVi g



&

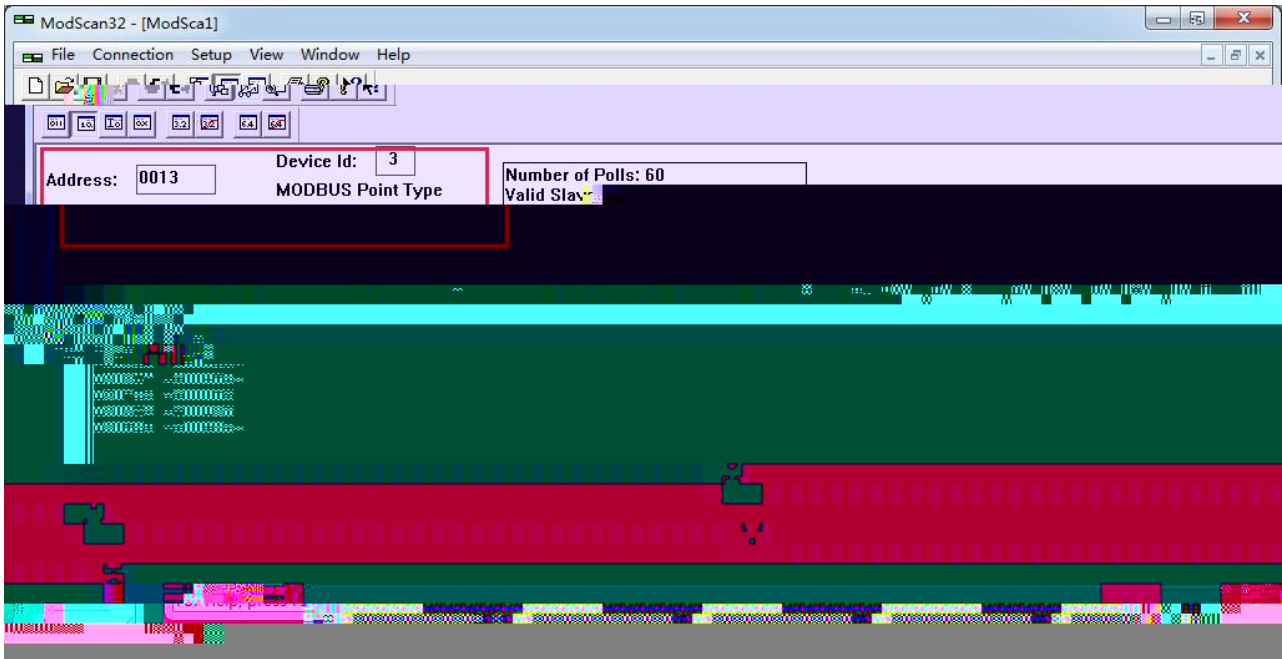
FG(,)





(K:]

)\$&



7.

