

---

**ROUIN**

Modbus



RVNet-MB-S ModbusASCII /RTU PLC WFi  
 AP STA AP+STA WFi WFi  
 ModbusASCII /RTU  
 RVNet-MB-S ModbusASCII /RTU /  
 ModbusASCII /RTU ModbusASCII /RTU  
 SCADA ModbusTCP ModbusUDP  
 RVNet-MB-S RS485 RS232

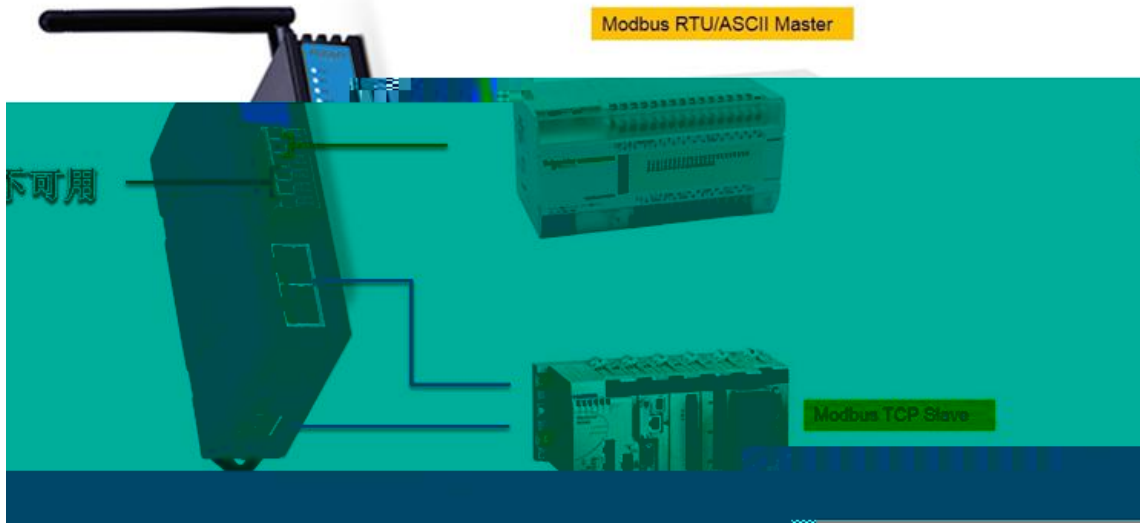
RVNet-MB-S

RVNet-MB-S RS485	RS485	Modbus RTU/ASCII	Modbus TCP
RVNet-MB-S RS232	RS232	Modbus RTU/ASCII	Modbus TCP

- 1 35mm Modbus RTU/ASCII RS485/RS232
- 24VDC
- 2 WEB
- 3 Modbus RTU/ASCII Modbus TCP
- 4 WFi AP STA AP+STA
- 5 WFi Modbus TCP Modbus
- 6 Modbus TCP MODBUS UDP  
Modbus TCP Modbus TCP
- 7 RS485 RS232 9600bps~115200bps
- 8 2KV ESD
- 9 Modbus RTU/ASCII PC PLC
- 10





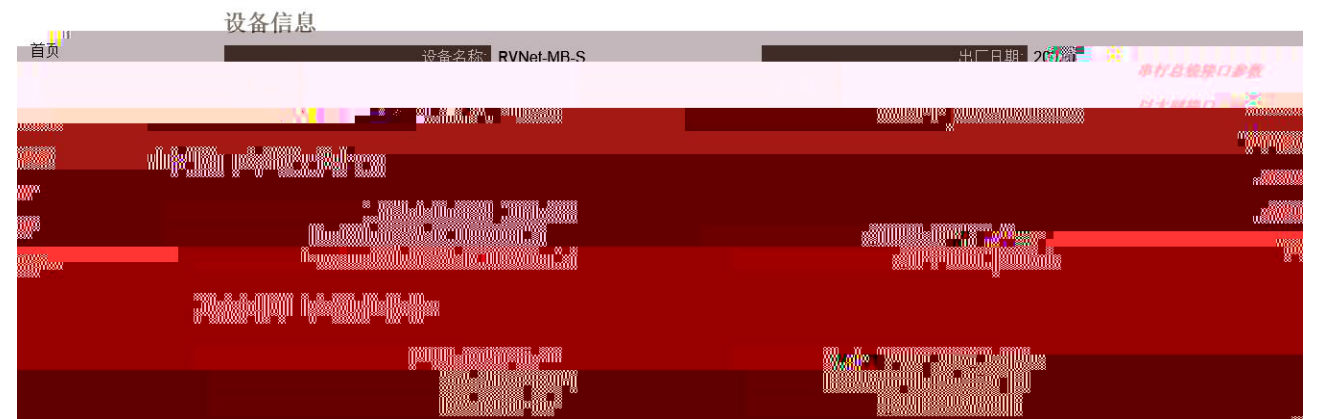
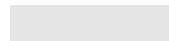
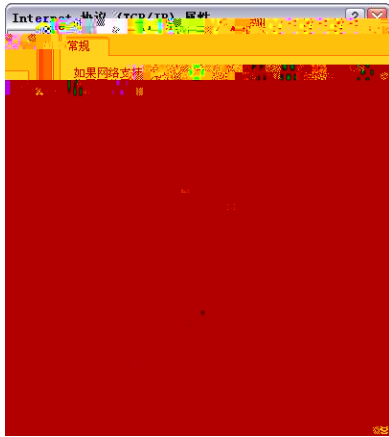


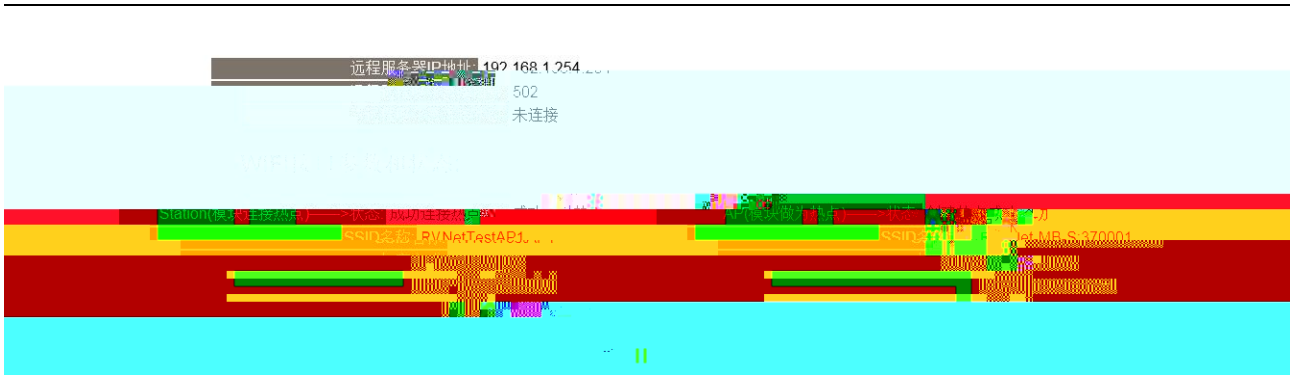


---


mb

			a	

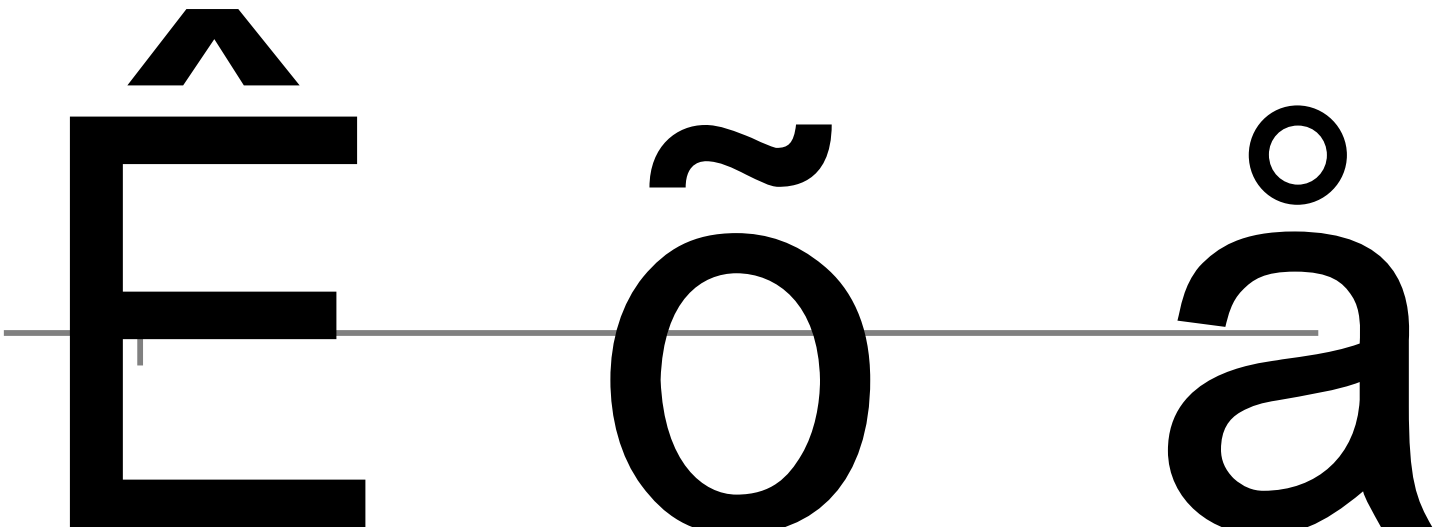




WiFi

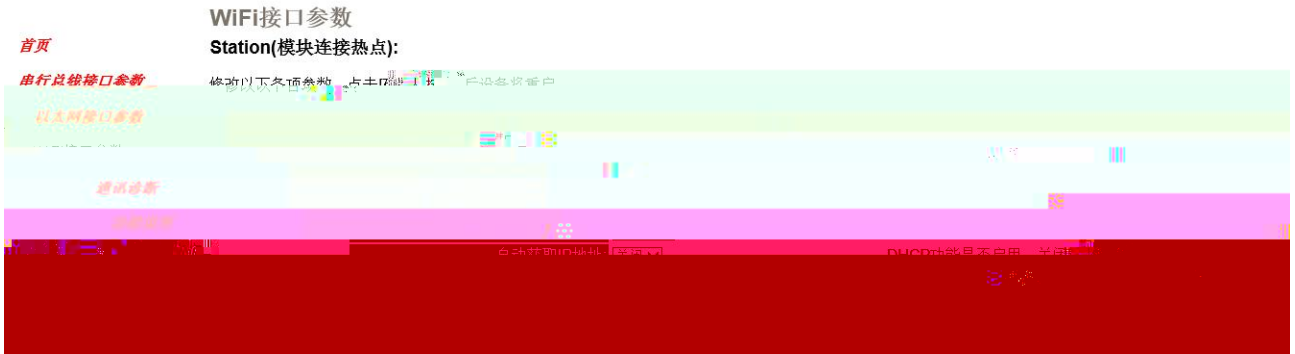
WiFi

Station AP



---

---



AP(模块作为热点):

设置	描述
AP功能: 开启	AP功能是否启用，关闭则不启用创建热点功能。
创建热点SSID: 192.168.1.1	模块创建的AP热点SSID名称，最大32个字符。
热点加密方式: WEP	模块创建的AP热点的密码，最大64个字符。
AP的IP地址: 192.168.1.1	AP的IP地址。

Station

WiFi

Station

Station

SSID

AP

SSID

32

AP

64

AP

WEP

WPA

WPA2

IP

IP

IP

IP

Station

IP

192.168.1.168

Station

255.255.255.0

Station

192.168.1.1

AP

WiFi

AP

AP

SSID

AP

SSID

32



---

h n b

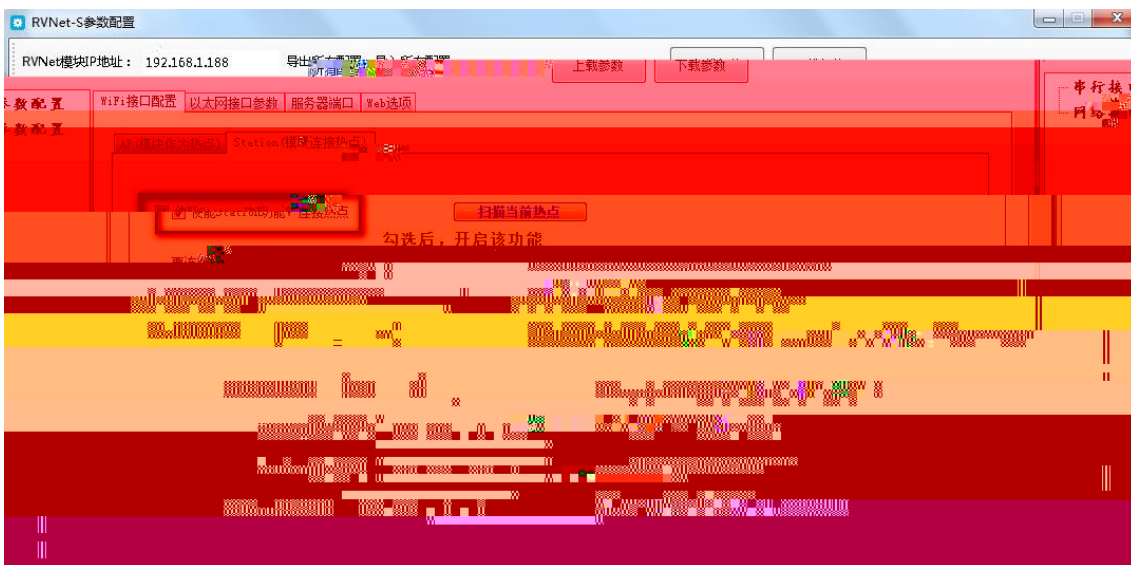
n

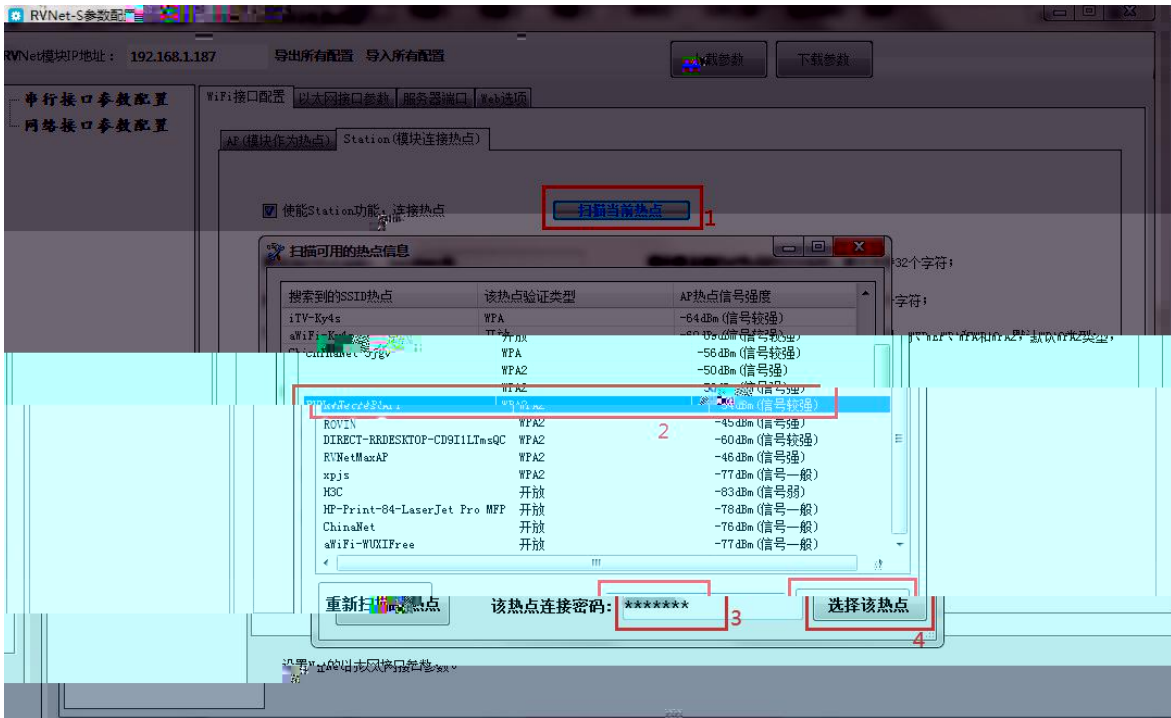
lll

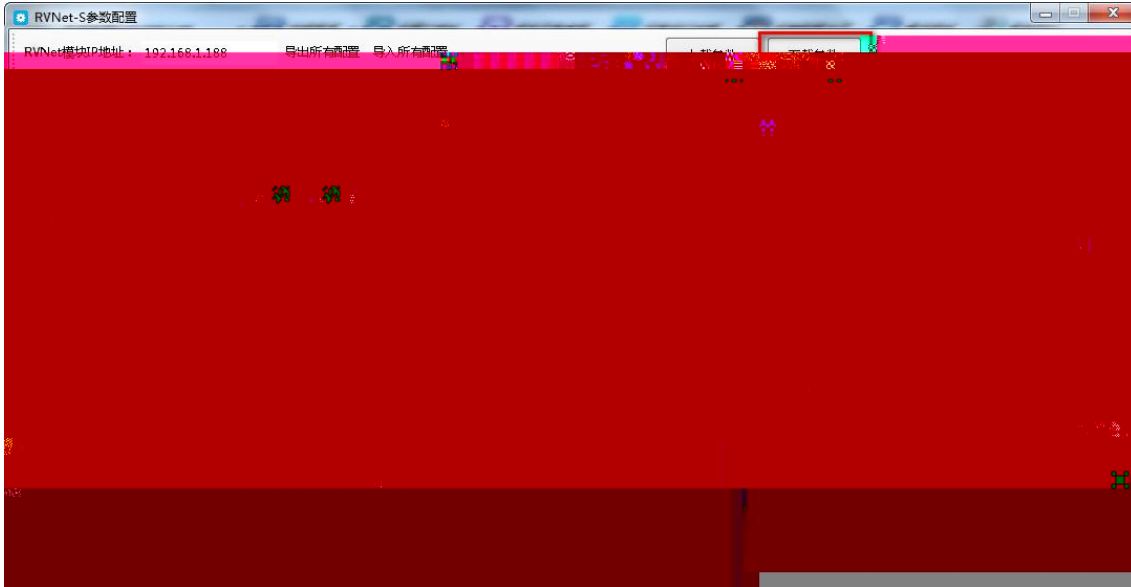
u

uk

---

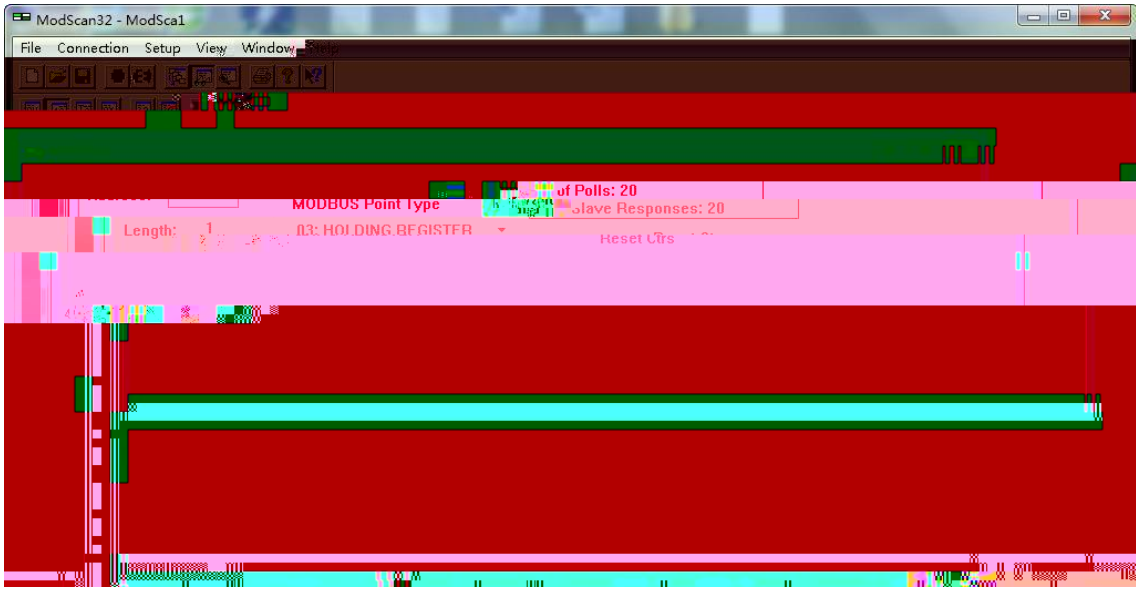






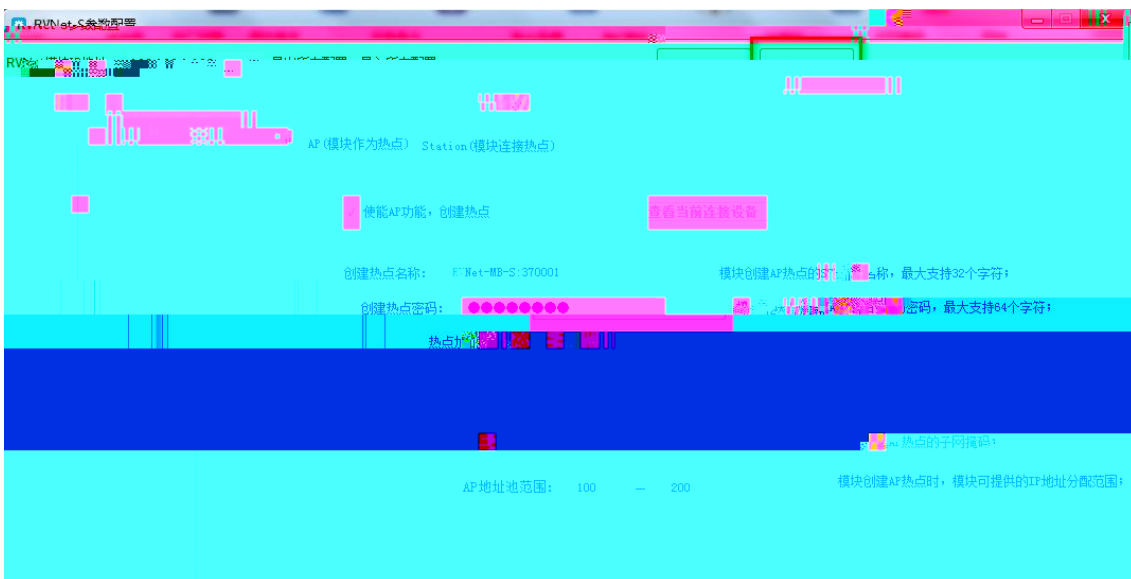
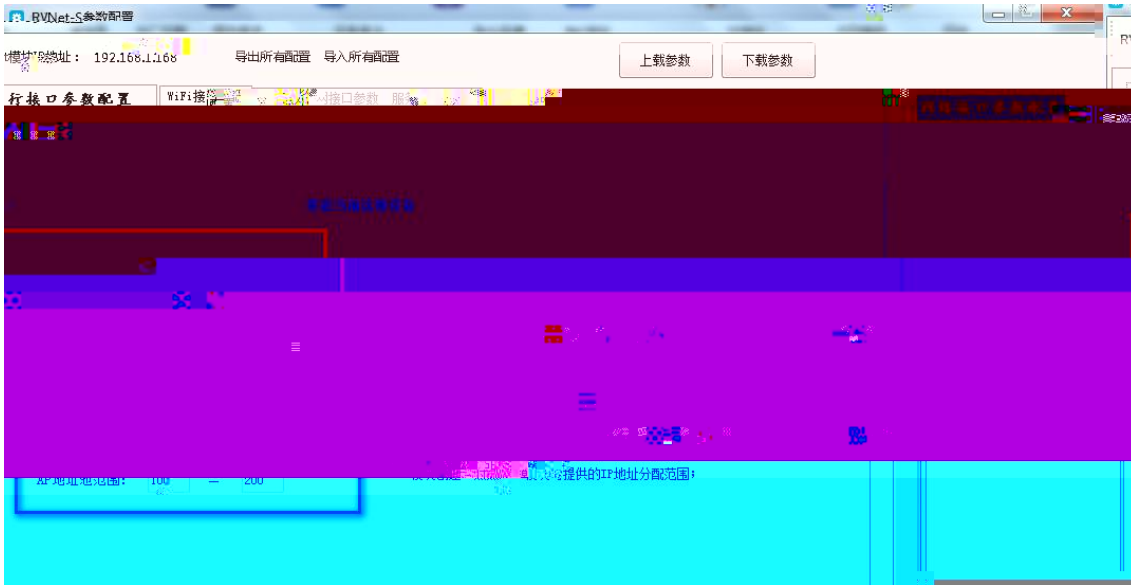


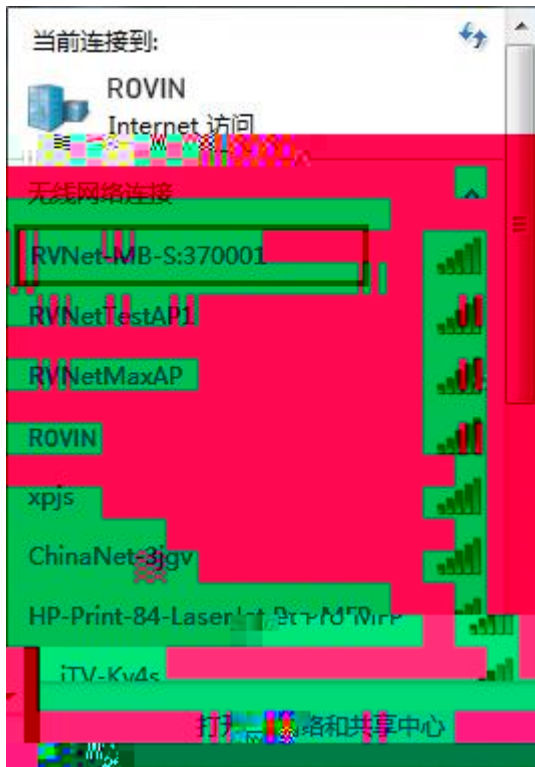
€ m

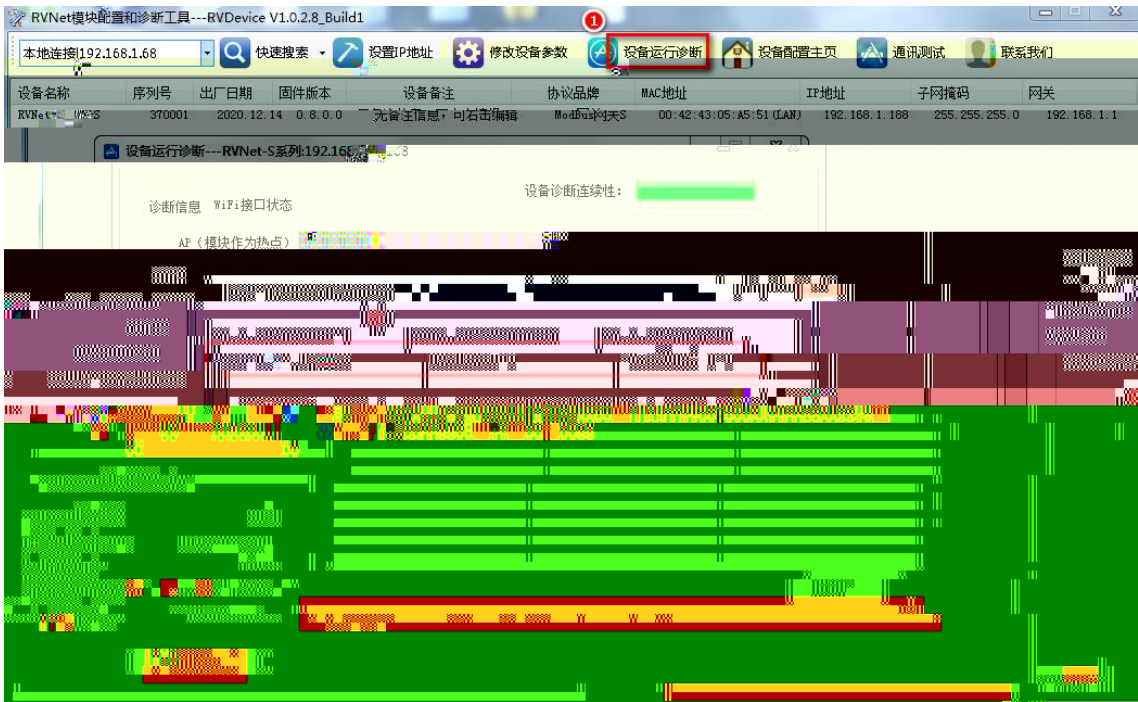
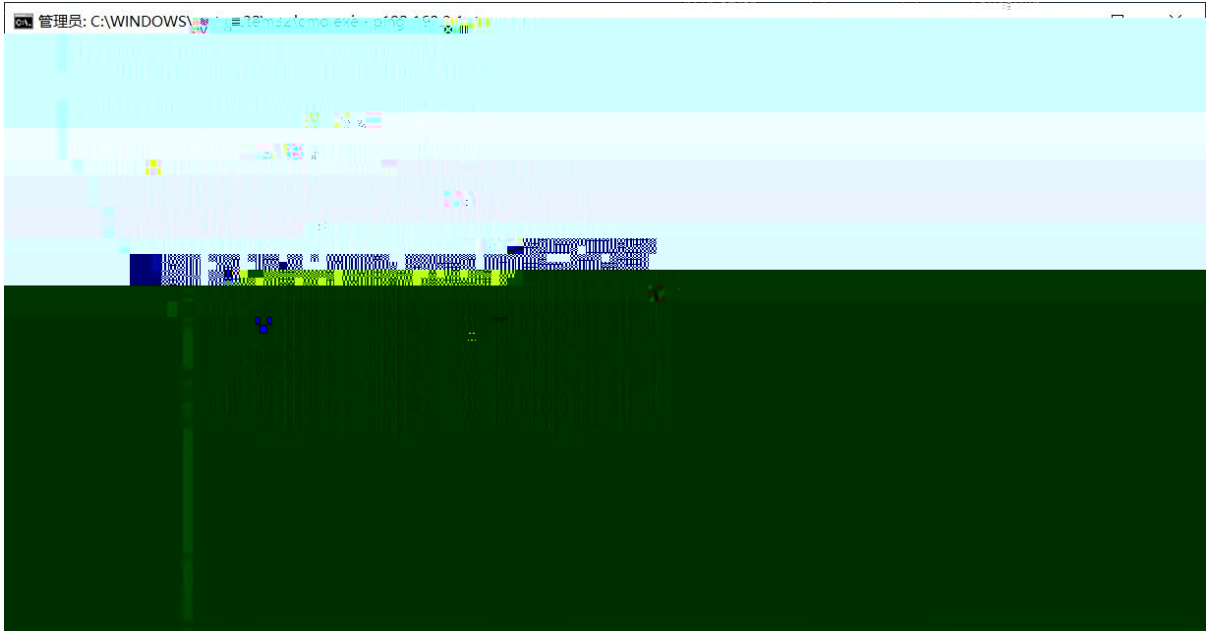


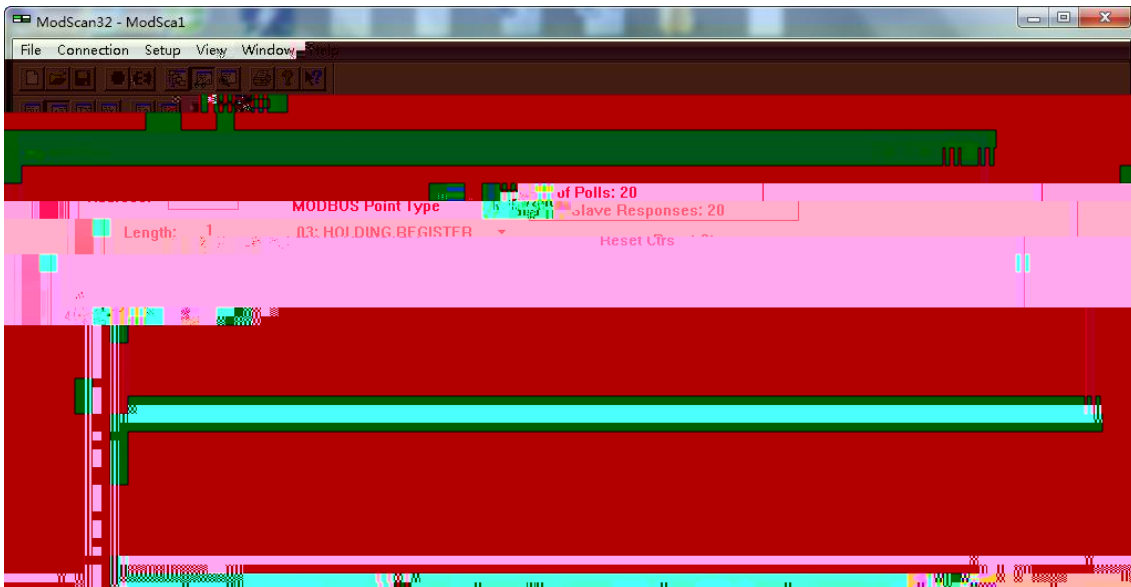
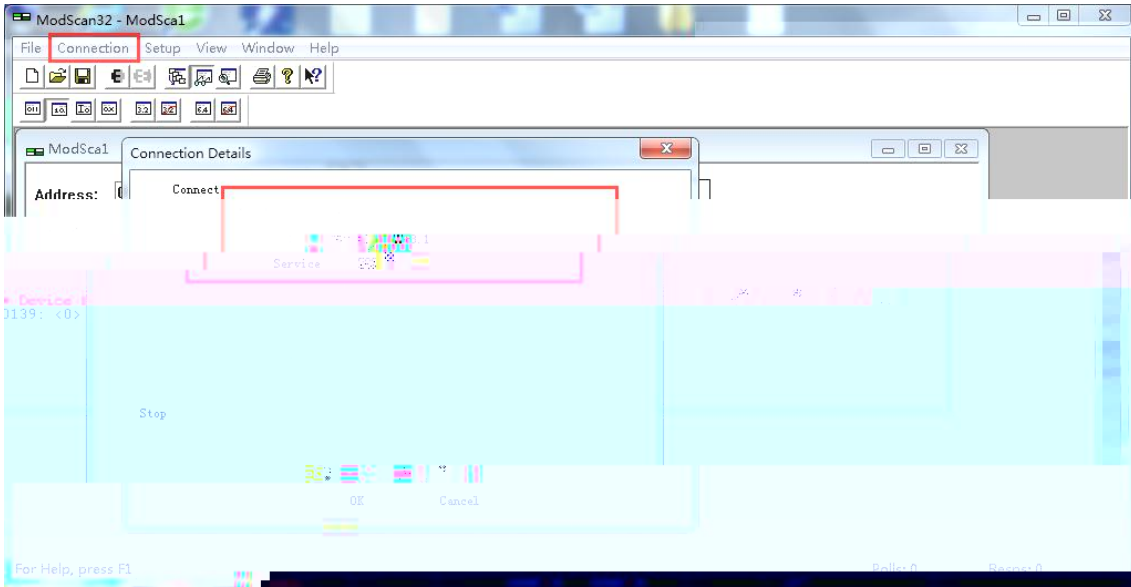
" "







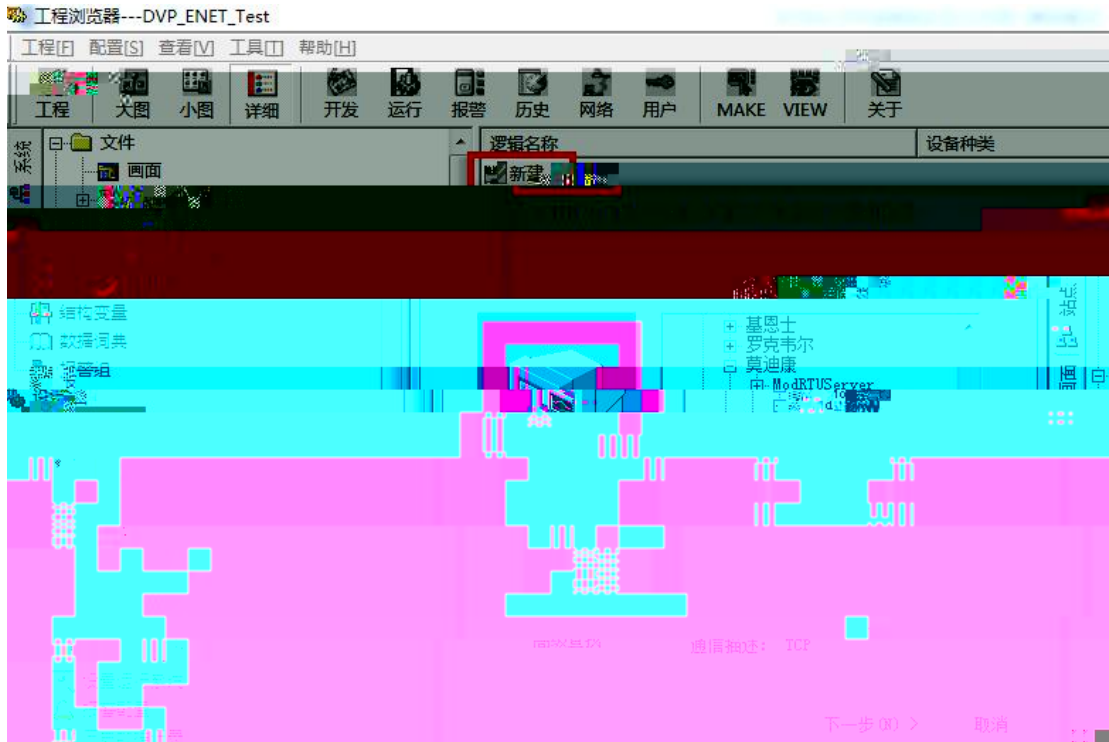




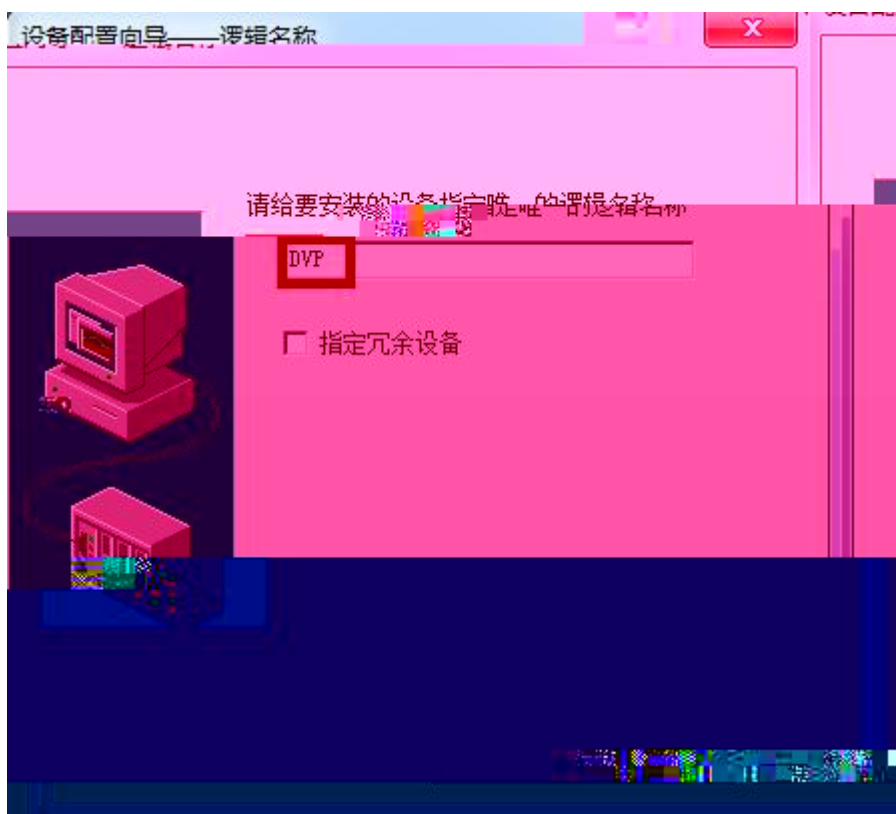
t

1.

2. " COM" " " " ModbusTCP-TCP" " "



3.



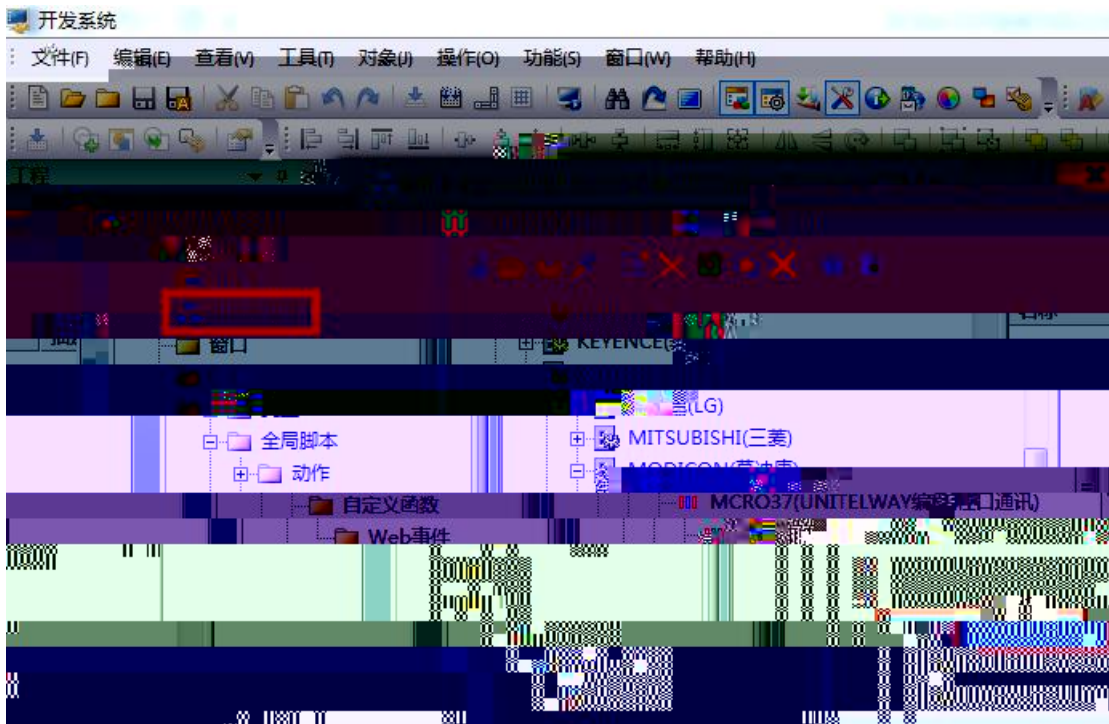
Modbus



5.



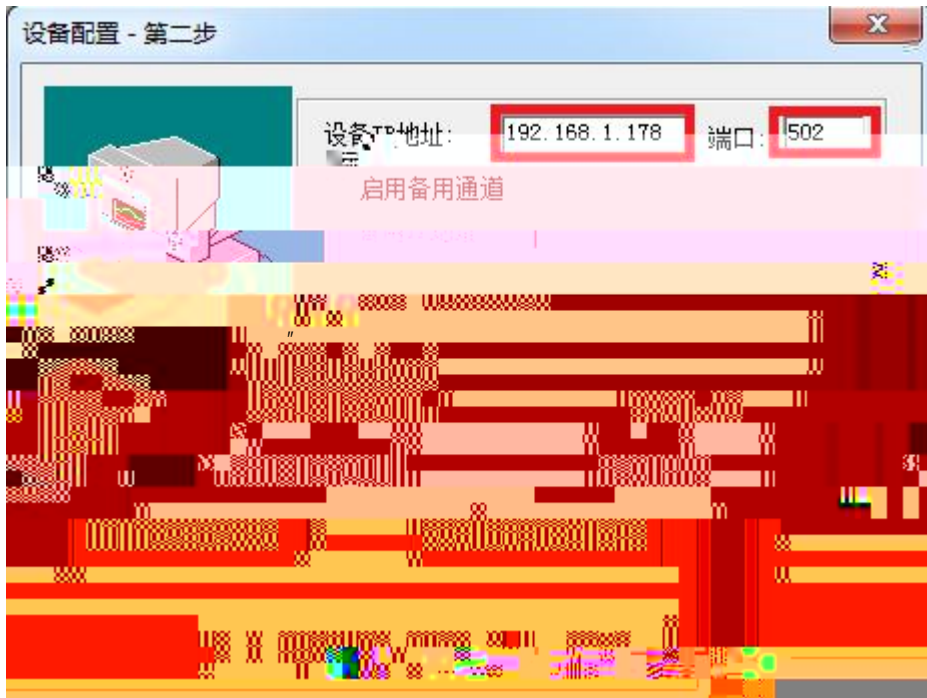
1. " IO " PLC " MODI CON -MODBUS TCP "



2. " " DVP " " 1   
Mdbus " "



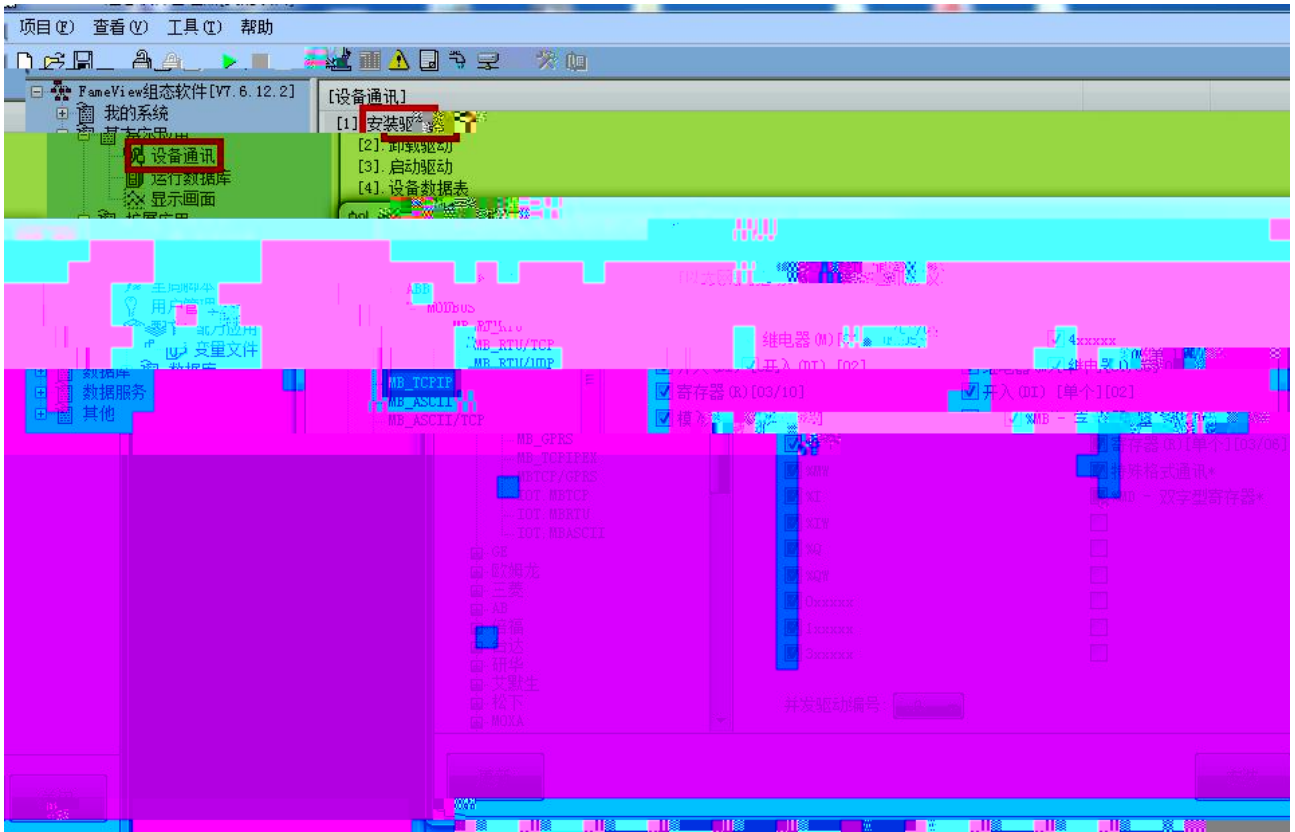
3. " IP " RVNet-MB-S IP 192.168.1.178 " " 502



4.

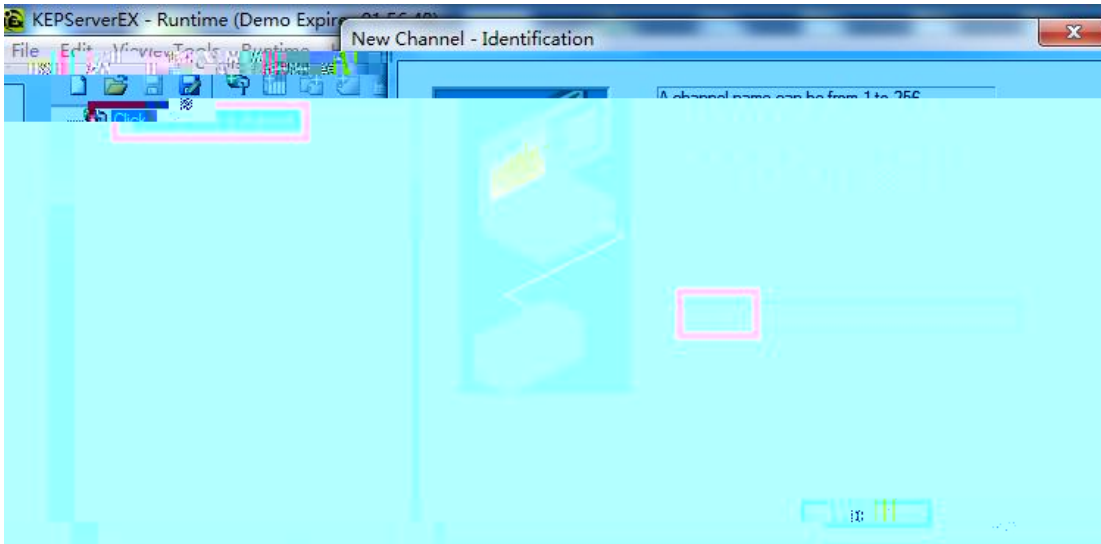


1.

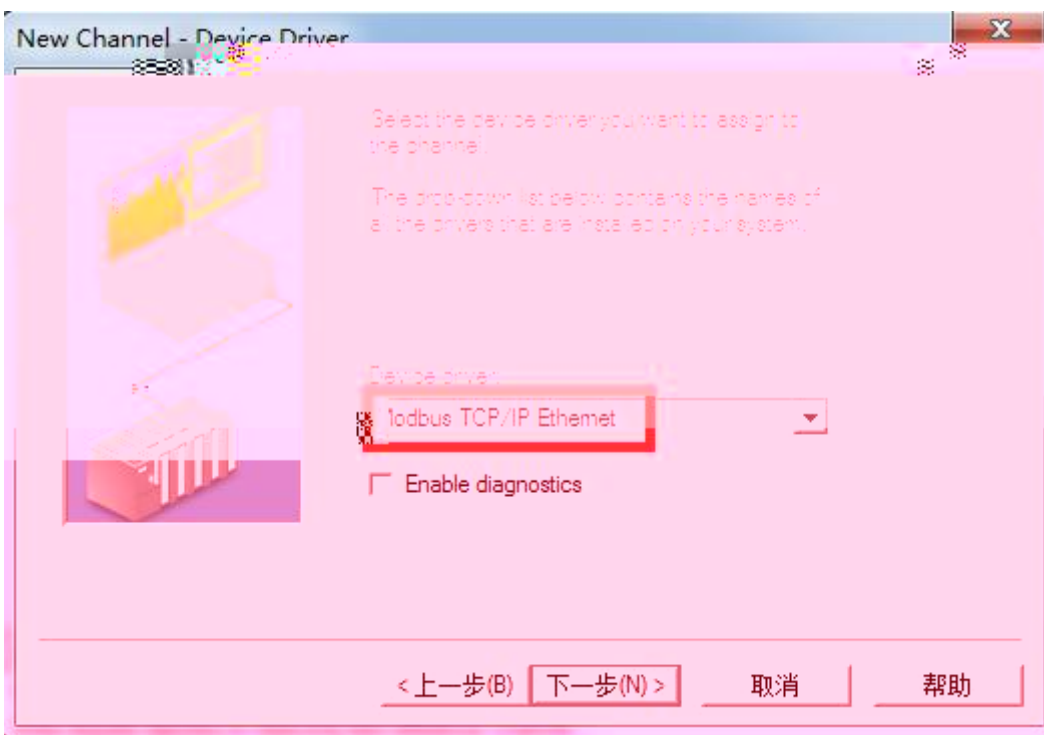


2 " " " " XJ " MB " MB

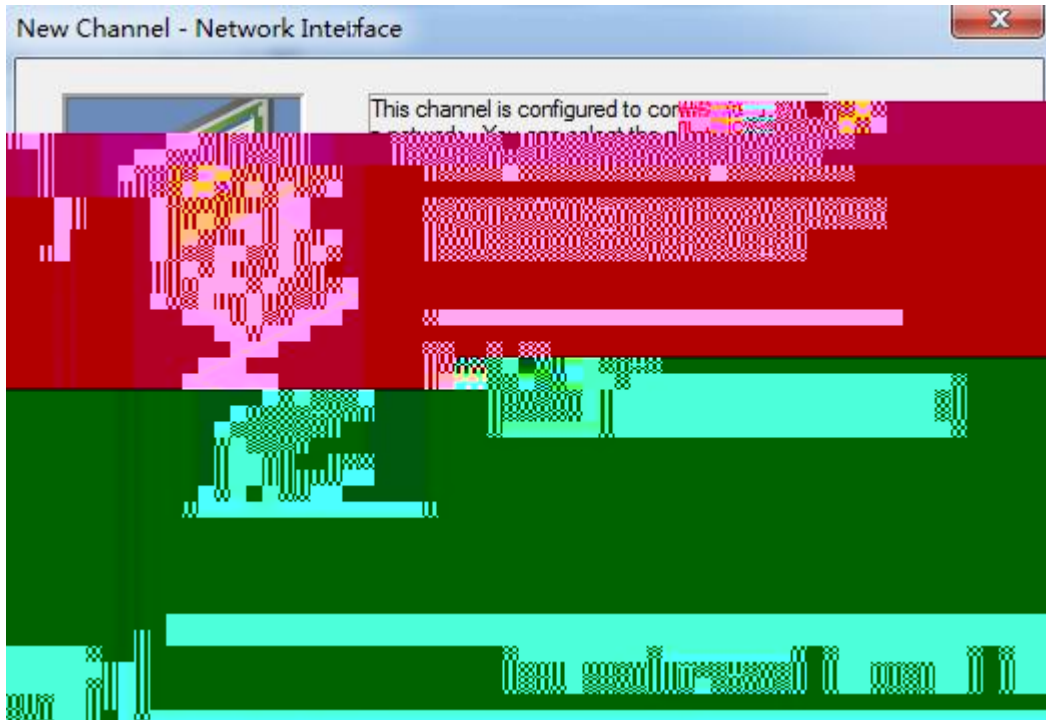
1. KEPServerEX " Click to add a channel "



2. " Modbus TCP/IP Ethernet "



3. " Default "

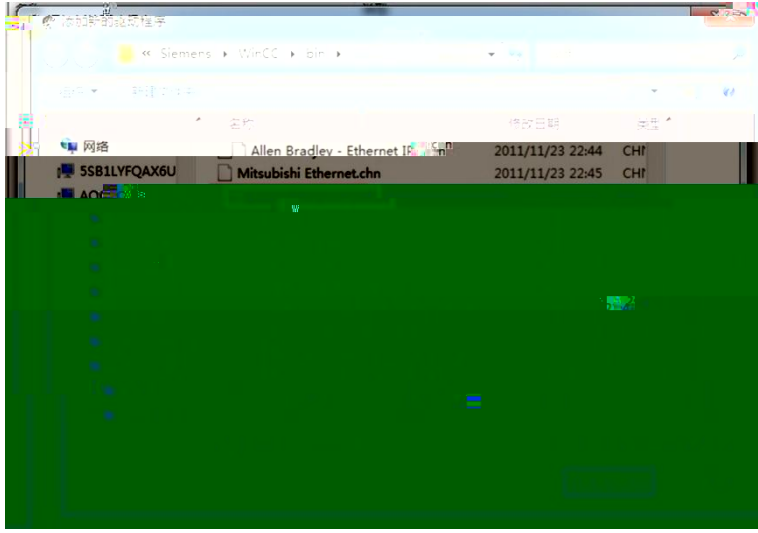
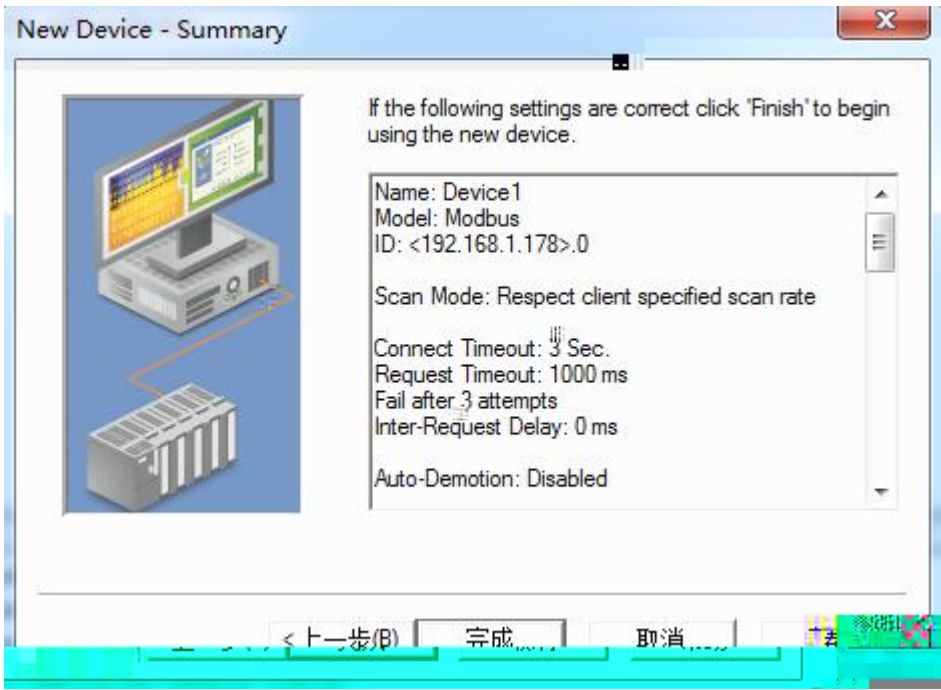


4. "click to add a device" , d

---

---

1



" " " " " "

" [Redacted]



---

⊆

---

|

